

# CLEANER GREENER ELECTRIC POWER

Alameda County residents and businesses will soon have a new—greener—choice for the electricity provider that powers our homes and businesses.

East Bay Community Energy (EBCE) will be a community-controlled power supplier, committed to providing electricity generated from renewable sources such as solar, wind and geothermal.

Alameda County and 11 of its cities\* have formed the East Bay Community Energy Authority and are working with the community to launch EBCE. Our communities would benefit from:

- More renewable energy sources
- Reduced greenhouse gas emissions
- Competitive rates
- Innovative services
- Local control
- Local projects/jobs and economic benefits

The time is right for a new option.

\* Newark and Pleasanton are not members at this time (April 2017). The City of Alameda is served by its own utility.

## STEPS AHEAD FOR EBCE

EBCE will provide electricity generated from clean, renewable sources that pollute less and produce fewer greenhouse gases. Using more renewable energy is an easy, economical way to reduce our carbon footprint and meet community climate action goals.

You can join the conversation in your community and sign up on the website to follow our progress during the coming year. Learn more at [EBCE.org](http://EBCE.org)



Conduct community outreach **Ongoing**

WINTER  
2016

Form Joint Powers Authority (JPA) with County and participating cities

Submit Implementation Plan to the California Public Utilities Commission

SUMMER  
2017

FALL  
2017

Finalize energy services contracts

Set electricity rates and send customer enrollment notices

WINTER  
2017

SPRING  
2018

Begin providing cleaner, greener electricity



[info@EBCE.org](mailto:info@EBCE.org)  
[EBCE.org](http://EBCE.org)



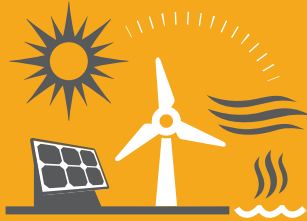
# CREATING A BRIGHTER FUTURE

THE POWER TO CHOOSE

[EBCE.org](http://EBCE.org)



# YOUR LOCALLY RUN ELECTRICITY PROVIDER



SOURCE

**EBCE**

buying and building  
renewable energy



DELIVERY

**PG&E**

delivering energy,  
repairing lines,  
billing customers



CUSTOMER

**YOU**

benefiting from  
cleaner energy,  
local control



# INNOVATIVE PROVEN MODEL

Similar programs in the Bay Area now provide greener electricity than PG&E, which offers about 30% renewably sourced electricity. Our recently completed technical feasibility study shows that we can do the same here, and 16 other California counties plus the City of San José are exploring starting their own programs.

EBCE will buy electricity on your behalf, with more renewable power than PG&E provides. PG&E will continue to deliver the electricity to homes and businesses over its existing power poles and lines, just as it always has. PG&E crews in their distinctive blue trucks will still maintain the lines and repair them as needed. PG&E will also send bills and provide customer service.

Since EBCE is a not-for-profit agency, net revenue can be reinvested in programs that keep rates competitive, develop more local renewable energy, provide for energy efficiency improvements and create incentives for local solar generation.

Alameda County and 11 of its cities have formed EBCE. Once power is ready to be delivered, the transition will be seamless; you'll receive the same electric service and reliability as before, without interruption. And you'll have a choice: those who prefer to remain with PG&E can choose that option.

	MCE CLEAN ENERGY*	SONOMA CLEAN POWER*	CLEAN POWERSF*	PENINSULA CLEAN ENERGY	PG&E*
Base Renewables	52%	36%	35%	50%	30%
Total % Carbon-Free	64%	77%	63%	75%	59%**
100% Renewable Option	✓	✓	✓	✓	✓

\* 2015 Electric Power Generation Mix — latest to be certified

\*\* Includes 23% nuclear