

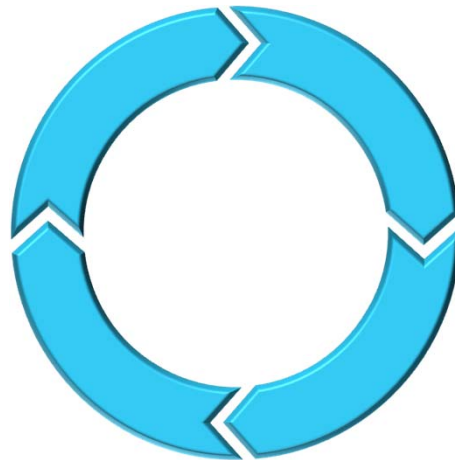
Altamont Solar Clēnera

June 2017

Clēnera Is Different

Strong & Expanding Installed Base

- Over 620 MW DC installed
- 100% success rate on projects and contracts
- Over 4 GW project pipeline through 2022



Built for Lowest Lifetime Cost

- Integrated platform from development to asset management
- Capital is direct from low cost funds
- No construction or project debt supports speed, efficiency, flexibility, and lowest cost
- Focus on large utility scale 20 to 200MW
- Standardized engineering and volume procurement across projects

Experienced and Efficient

- Over 100 years of combined solar experience
- Team has developed nearly 4 GW of operating renewable projects across North America
- Operating on software platform and systems supporting rigor and efficiency across team

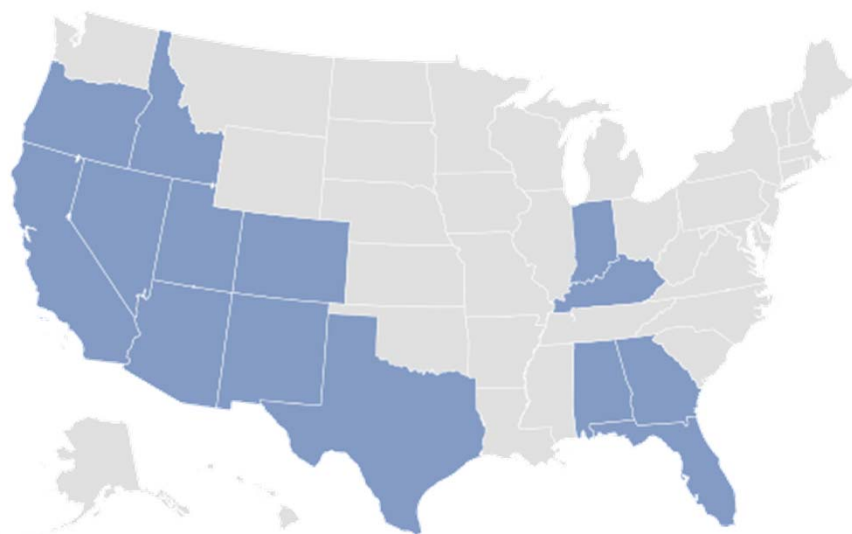
Long Term Perspective

- Projects engineered and built for 35 year lifetime
- Long-term investors with intent to hold for life
- Engineering and quality control staff in factories to support procured equipment lifetime performance
- Emphasis on large, qualified suppliers that can provide a meaningful parent guarantee behind the warranty

Clēnera Growth Across North America

Cost, efficiency, and team driving growth

- 620 MW-DC installed capacity by YE2017
- 14 plants operating and in construction
- 8 plants operating in California
- 4 GW in development for 2018-2022



Project Name	Project Status	State	MW-AC	MW-DC	PPA Buyer	InterX Utility
Westlands	Operational	CA	18	23.1	PG&E	PG&E
IMS	Operational	IN	9	11.2	IPL	IPL
Lancaster	Operational	CA	3	3.8	SCE	SCE
Avalon 1	Operational (Sold)	AZ	29	35.0	TEP	TEP
Kettleman	Operational	CA	20	27.0	Palo Alto	PG&E
Avalon 2	Operational	AZ	16	21.5	TEP	TEP
Frontier Solar	Operational	CA	20	28.0	Palo Alto	PG&E
Five Points	Operational	CA	60	84.1	UC	PG&E
Grand View	Operational	ID	80	108.5	IPCo	IPCo
ID Youth Ranch	Philanthropic	ID	0.1	0.1	IPCo	IPCo
Three Peaks	Operational	UT	80	107.7	PacifiCorp	PacifiCorp
Sunray Energy 2	Construction	CA	20	26.6	PG&E	PG&E
Sunray Energy 3	Construction	CA	13.8	17.2	SCE	SCE
Giffen	Construction	CA	20	27.6	UC	PG&E
LaFayette	Construction	AL	79.2	111.92	APC	APC
Altamont	Construction Pending	CA	20	27.0	TBD	MID
Planned projects for build in 2018-2019	Construction Pending	USA	817	1,593	Various	Various
TOTAL			1,297.9	1,753.3		

We Care About Communities

Annual Charity Solar Projects

2015 – ASARCO Learning Center

- 10 KW – Tucson AZ



2017 – Interfaith Sanctuary

- 35 KW – Boise ID

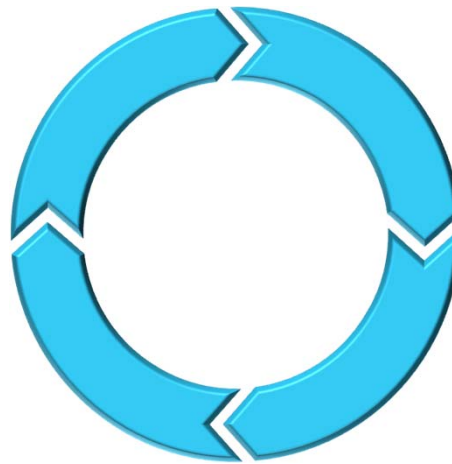


2016 – Idaho Youth Ranch

- 100 KW – Caldwell ID



2018 – To Be Announced

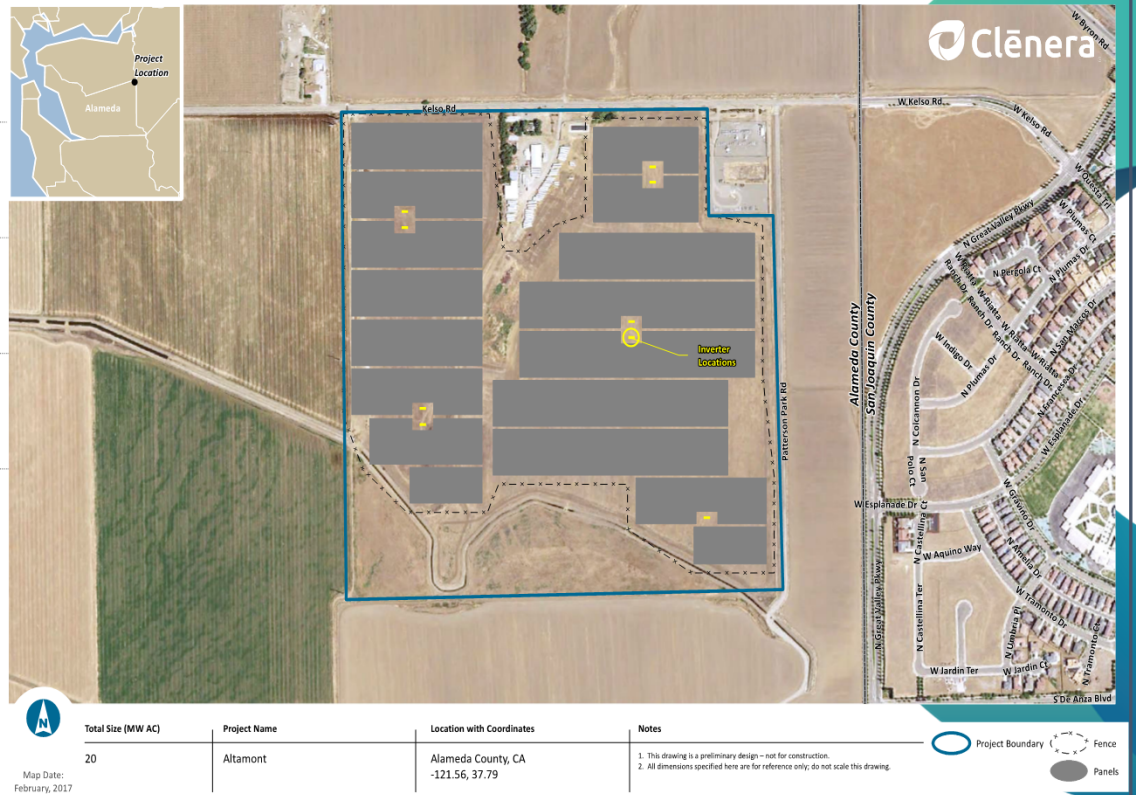


Altamont Solar Project

Size	20 MWac
Location	Alameda County
Point of Delivery	CAISO - Tracy Substation
Annual Energy	51,800 MWh

Development Status

- Site Control
- Interconnection Facility Study complete
- Only permitted solar project in Alameda County
- Capable of meeting EBCE's Q2 Energy Launch



Four Pillars for Renewable Energy Development

