



Staff Report Item 12

TO: East Bay Community Energy Board of Directors

FROM: JP Ross, Senior Director Local Development, Innovation and Electrification

SUBJECT: Local Development Budget Update (Informational Item)

DATE: January 22, 2020

Recommendation

Receive update on Local Development Activities.

Background and Discussion

On June 19, 2019 the Board approved the Local Development budget proposed by Staff. The approved budget of \$6.34M included a Capital set aside of \$1.2M for above market costs associated with Alameda County renewable energy contracts as well as \$1.5M in additional funds that were unallocated as of the June meeting. The Board approved a Staff request for an additional \$500k at the November Board meeting to develop an initiative to support resilience for Medical baseline customers during Public Safety Power Shutoffs, increasing the total budget to \$6.84M.

The following report describes the Local Development activities and initiatives that are currently in process and planned for the remainder of FY20.

Budget

2020 Budget - Approved 6.19.19	
Program Areas	2020 Budget (\$000)
Demand Response	(\$150)
Energy Efficiency	(\$100)
Building Electrification	(\$675)
Vehicle Electrification	(\$2,000)
Collaborative Procurement	(\$600)
Enhanced NEM	(\$350)
Community Investment Fund	(\$600)
Sponsorships/Events	(\$65)
Capital Set Aside	(\$1,200)
Unallocated Funds 6.16.19	(\$1,500)
Additional Medical Baseline 11.20.19	(\$500)
	(\$7,740)
Non Operational Revenue	
BAAQMD Grant	\$150
Grants and LCFS Credits	\$750
Local Development Budget	(\$6,840)

Mid Year Local Development Budget Update January 22, 2020 (\$000)		
Program Areas	Spent/Contracted	Planned
Demand Response	(\$195)	
Energy Efficiency	(\$100)	
Building Electrification	(\$400)	(\$900)
Vehicle Electrification	(\$400)	(\$1,760)
Collaborative Procurement	(\$500)	(\$620)
Enhanced NEM		
Community Investment Fund	(\$400)	(\$250)
Sponsorships/Events	(\$20)	(\$45)
Capital Set Aside	(\$1,200)	
Sub-Total LDBP Operating Funding	(\$3,215)	(\$3,575)
Non Operational Revenue		
BAAQMD Grant	\$150	
Grants and LCFS Credits	\$750	
LDBP Operating Funds*	(\$5,890)	
Additional Local Development Spending		
LDBP Staff Costs	(\$600)	
LDBP Reserve Funds - DC Fast Charging Pilot		(\$1,400)

*The Mid-Year budget has -\$1M in funds still to be allocated

Program Metrics and Success Criteria

Programs will be evaluated based on a set of success criteria that staff is developing in coordination with the Community Advisory Committee. Criteria include:

- Environmental Benefits of greenhouse gas and criteria pollutant emissions reductions.
- Economic Benefits of jobs created and cost savings
- Social Benefits for impacted and disadvantaged communities

Staffing

Budget: \$600k

The Local Development team now includes four full time staff. Staffing costs do not come from the local development budget, but are included herein as a line item for informational purposes.

Demand Response

Peak Day Pricing

Budget \$100k

Timeframe: Post program evaluation

Peak Day Pricing (PDP) is a demand response program offered by EBCE to non-residential customers. EBCE ran this program in 2019 and called events based on weather conditions and forecasted pricing. Customers were notified one day ahead of Event Days and encouraged to shift or reduce their load from 2pm to 6pm the next day to avoid surcharges and help alleviate peak demand. EBCE enrolled 16 commercial customers with 30 meters. EBCE called 8 event days and is in the process of evaluating the program to report back to the Board.

Battery Demand Response Pilot

Budget \$5k

Timeframe: Post program evaluation

EBCE developed and ran the Battery Demand Response Pilot in 2019. The purpose of the Pilot was to test how EBCE can use existing behind the meter batteries to reduce procurement costs. The pilot was offered to customers and aggregators operating BTM battery storage systems. EBCE offered \$100/MWh for energy delivered by batteries during event hours. EBCE enrolled 500kWh of batteries into the pilot program and called 2 events during the summer period. Staff is in the process of evaluating the program to report back to the Board.

Energy Efficiency

Developing Cost Effective Energy Efficiency Opportunities

Budget \$100k

Timeframe: In-Process

EBCE has retained ReCurve, an energy efficiency consultancy, to analyze all of EBCE's meters to help identify opportunities for cost effective energy efficiency procurements. This will allow EBCE to deliver time-based energy savings and target programs to the customers who will benefit most from participation. This analysis will allow EBCE to issue "pay for performance" solicitations that pay for delivered energy efficiency savings to EBCE.

Energy Efficiency Strategy Development

Budget \$0 - Staff Time

Timeframe: In-Process

State law allows CCAs to access public purpose funding for EE programs, and several CCAs including MCE, Lancaster and Redwood Coast Energy Authority have successfully applied to administer these funds. Staff is evaluating the opportunity to administer and run Energy Efficiency (EE) programs funded by Public Purpose Funds. There is a significant amount of overhead to administer CPUC EE programs. Staff will determine if EBCE can bring value to our customers through running our own EE portfolio.

Building Electrification

Reach Code Initiative

Budget \$300k

Timeframe: In-Process

The Reach Code initiative has been supporting our Cities to pass building and vehicle electrification reach codes, which will come into effect in 2020. Passing Reach Codes is a very important step for cities to take to ensure the future building stock has the necessary electrical capacity to support the state's goal of 5 million zero emission vehicles (ZEV) on California roadways (80,000 in Alameda County) by 2030 and 250,000 chargers statewide by 2025. The existing building stock was not constructed to support EV charging. Upgrading these buildings with additional electrical capacity is expensive and a significant barrier to vehicle electrification. EBCE's consultant, TRC Engineering, has been supporting city staff with the development of staff reports,

cost effectiveness tests and model codes. In addition to technical support EBCE has offered any city that passes a reach code a \$10,000 grant. We expect 7-8 cities to pass reach codes for 2020 adoption.

High Rise Multi-Family Technical Assistance

Budget \$100k

Timeframe: In-Process

Multi-family high rise buildings are a major area of new development across EBCE's territory. Staff is aware of 28 buildings with ~5400 dwelling units currently under development in EBCE territory. However, all electric high-rise multifamily buildings are not yet compliant with the California Energy Commission and many developers are unfamiliar with all electric systems for space and water heating or cooking. EBCE has retained Association for Energy Affordability to provide technical assistance to developments that will be filing for building permits in the near future. AEA has completed a webinar for developers, which is posted on the EBCE website, and is currently enrolling developers to receive technical support.

Heat Pump Hot Water Heater Incentive Program

Budget \$300k

Timeframe: Planned

Heat Pump Water heaters are an efficient technology to heat water with electricity. Currently approximately 90% of domestic water heating is done with natural gas, and half of the gas use in homes is for water heating. Natural gas combustion in homes is a major source of indoor air pollution and greenhouse gases. Heat pump hot water heaters can provide clean, safe water heating to EBCE customers while also reducing GHG emissions and energy bills and increasing electricity sales. EBCE is evaluating the opportunity to launch a regional water heater incentive program administered by StopWaste with other Bay Area CCA's.

Induction Cooking Education Campaign

Budget \$300k

Timeframe: Planned

Electrification is key to responding to the climate crisis and moving away from burning natural gas in buildings. People are very attached to gas cooking and have a strong aversion to electric ranges, based on previous experience with traditional electric coil stovetops that are slow to respond and difficult to control. This emotional attachment is evident with the legal challenge to the City of Berkeley natural gas ban, which is being lead by the California Restaurant Association. EBCE is developing an induction cooking education campaign that will engage the public and professional chefs with new electric kitchen appliances that are more powerful, more responsive and safer to operate than gas appliances. The campaign will include outreach at festivals, farmers markets and curated electric cooking events where participants can experience first-hand the benefits of all electric kitchens.

Induction Cooking Restaurant Incentive

Budget \$200k

Timeframe: Planned

Induction cooking in commercial kitchens is still an emerging technology and more costly than gas appliances. EBCE will provide incentives to restaurants to install induction cooktops. The incentive will cover the difference in price between induction and natural gas cooktops.

Transportation Electrification:

Municipal Fleet Electrification

Budget \$400k

Timeframe: In-Process

EBCE is providing technical assistance to six (6) member communities to complete rapid fleet electrification assessment and plans assistance to up to 6 EBCE member communities. The goal of this project is to enable each community to have a plan on how to electrify their municipal fleets by 2030, and to approve policies in 2021 that would set them on path to achieving goal.

Projects have launched for the cities of Albany, Berkeley, Dublin, Oakland. Each of these cities expressed interest and committed to participation by a pre-RFP deadline EBCE established in Summer 2019. Pending members have since indicated interest. Remaining budget allows for Hayward and Alameda County (pending internal approval) to join the project. Additional assessments for other cities is TBD based on increased budget.

This work also connects to EBCE's collaboration with the California Energy Commission (CEC) to bring a major EV charging infrastructure program to Alameda County in 2021. Helping member communities understand where they need charging infrastructure to support municipal fleet electrification will enable them to more easily access these incentive dollars should EBCE's CALeVIP project be approved (see CALeVIP description below).

California Energy Commission Electric Vehicle Incentive Program (EViP)

Budget \$1.5M from FY20 budget will be held for 2021 EViP incentives

Timeframe: In-Process

The CEC's CALeVIP investment program brings significant state funding to counties with the greatest need of charging infrastructure. Paired with investment from a lead project partner, the goal of CALeVIP is to provide robust financial incentives for EV charging infrastructure to meet California's mandate of 5 million ZEVs on roadways by 2030 (with 80,000 in Alameda County), and 250,000 chargers by 2025. EBCE has coordinated with the CEC throughout 2019/20 on development of a countywide CALeVIP project that if approved by the CEC would launch in 2021. Based on the state's budget availability for 2021 projects the CEC's investment in Alameda County could range from \$20M-\$33M. EBCE submitted a required, non-binding Letter of Intent to the CEC requesting \$33M for a 4-year incentive program. As the lead project partner, **EBCE will provide an additional \$16M of funding (\$4M/year; 2021-2024).** Because this would be a countywide program, EBCE is also coordinating with Alameda

Municipal Power who is considering an investment commitment for fast charging in their service area.

Streamlined EV Charging Infrastructure Permitting AB1236 Compliance

Budget \$0 - Staff Time

Timeframe: In-Process

On January 1, 2016 AB 1236 went into effect, requiring every city and county to adopt an ordinance (by September 30, 2017) that created an expedited, streamlined permitting process for EV charging infrastructure. It also required creation of a checklist of requirements consistent with the legislature's goals and intent of AB 1236 to be posted on a city's permitting website. Many cities are not in compliance with AB 1236 across the state which in turn is slowing deployment of charging infrastructure. A new CEC requirement of all CALeVIP projects is that incentive funds are only accessible in AB 1236 compliant jurisdictions. In turn, EBCE began providing technical assistance to current and pending members, and the City of Alameda, to help each jurisdiction become compliant. EBCE's goal is to streamline the entirety of Alameda County by March 2020, in advance of CEC consideration of our CALeVIP project. In 2019 EBCE helped the following communities achieve compliance: Alameda County, Berkeley, Emeryville, Fremont, Livermore, Piedmont and San Leandro. Communities that will be streamlined by March include Albany, Dublin, Hayward, Oakland, and Pleasanton. EBCE is also coordinating with the Governor's office to update their EVCS Permit Streamlining Map as each of our communities ordinances and/or checklists are approved. For going above and beyond to achieve to streamline permitting countywide in November 2019 the Governor's office recognized EBCE with their first "ZEVE Award".

Publicly Accessible Charging at Municipal Sites

Budget \$1.4M from Local Development Reserve Funds

Timeframe: Planned

EBCE has been in discussion with Municipal partners who have identified public locations for DC Fast and/or Level 2 Chargers. For example, Oakland submitted an application for Electric Vehicle Charge Network (EVCN) program for 188 charge points but was not awarded funds due to program oversubscription. We will work with stakeholders to identify sites and costs for projects located in MUD "hotspots", in low-income communities, and/or conveniently near interstate corridors. EBCE would use Local Development Reserve Funds to help develop these projects and then recover those funds through both Low Carbon Fuel Standard (LCFS) credits and revenue generated from the chargers.

EV Charging Infrastructure Mapping - MUDs:

Budget \$0 - Staff Time

Timeframe: Completed

Using EBCE data we have mapped MUD density throughout our service area to target EV charging infrastructure investments. As previously noted, deploying charging infrastructure in existing MUDs can be challenging due to a number of critical factors including electrical capacity, parking configurations and parking designation. To

enable MUD resident's access to electric mobility options, EBCE is assessing development of a dense network of fast charging hubs strategically located near MUD "hotspots". This data is being used to inform EBCE's CALeVIP project development.

CALSTART M/HD vehicle electrification

Budget \$120k

Timeframe: Planned

In 2019 EBCE requested and received light, medium and heavy-duty (M/HD) vehicle registration data from the Department of Motor Vehicle. EBCE is currently analyzing this information to understand the ecosystem of all vehicles in our service area. We are also working specifically to establish relationships with the Port of Oakland, as well as transportation, distribution and logistics companies to determine Class 3-6 fleet operations, routes, and performance needs. EBCE has also signed onto CALSTART's Global Drive to Zero program. Drive to Zero aims to catalyze the growth of zero emission M/HD vehicle sector and establish first success markets in key regions, like Alameda County. EBCE will work with the CALSTART team to develop activities that result in future pilot initiatives to enable rapid scaling of Class 3-6 vehicle electrification in Alameda County. This collaboration also aims to help prepare fleets for pending 2021-2024 CALeVIP charging infrastructure incentive (see above).

Zero Emission Off-Road Equipment - Forklift Incentive Program

Budget TBD

Timeframe: Planned

In 2019 EBCE requested and received forklift registration data from CARB and is working to understand the ecosystem of engine and fuel types in Alameda County. We are also analyzing applicable incentive programs administered by PG&E (e.g., EV Fleet Ready) and CALSTART (e.g., CORE) to determine where gaps in funding may exist. EBCE plans to assess the cost of incentive program development to fill identified gaps, and the benefits to EBCE of LCFS credit revenue generation from the charging of electric forklifts. Based on the outcome of this analysis, EBCE will decide in 2020 whether to issue an RFP for consultant services to assist with administration of a potential incentive program.

Electric Carshare Pilot at Multi-Unit Affordable Housing

Budget \$40k

Timeframe: Planned

EBCE is working with on-demand electric car share provider Envoy to co-fund deployment of charging infrastructure in four EAH affordable MUD properties. Envoy's car share program enables residents who struggle to find reliable transportation an affordable, zero emission mobility option. Envoy was awarded a grant from the CEC to develop projects in the Bay Area. However, the EAH sites in Alameda County exceeded the grants allowable per project spending limit. EBCE is leveraging the CEC's investment and providing gap funding to Envoy in the form of an additional grant to enable development of these affordable MUD projects. Our investment will establish new collaborative relationships with EAH and Envoy while providing EBCE

with valuable insight on deployment of charging infrastructure in existing MUDs and charging utilization by electric car share users.

RE100 for EV LCFS

Budget \$0 - Staff Time

Timeframe: Completed

EBCE has become the first CCA, and the first load serving entity in the state, to receive CARB approval to register its 100% renewable energy product as a certified Renewable Pathway in their LCFS program. This step makes it possible for charging infrastructure network providers to capture highly valuable LCFS credits in a way that previously was only accessible through the procurement of renewable energy credits. EBCE is enabling vehicle miles traveled throughout Alameda County to be powered by 100% renewable energy and creating new opportunities for collaboration with charging network providers.

Resilience

EBCE is engaging in a variety of efforts to support enhanced community resilience in the face of increased Pacific Gas and Electric (PG&E) public safety power shutoffs (PSPS) events, and the ongoing threat of a major disaster (e.g., earthquake) in the San Francisco Bay Area. We are committed to investing resources that increase deployment of solar and/or battery energy storage systems (BES) to enable residents, businesses and our local government partners to retain essential power supply during a grid outage. EBCE efforts have been prioritized to focus on solutions for critical municipal facilities and our most vulnerable customers including low-income residents and disadvantaged communities (DAC), and those with electricity dependent medical conditions.

Through the initiatives described below, EBCE is addressing customer identification, outreach, technical assistance and providing procurement pathways that reduce the cost and complexity of BES systems. In turn, EBCE is in a unique position to promote other incentives like the Self-Generation Incentive Program (SGIP) to maximize participation and minimize costs of participation. With this funding our outreach efforts will amplify, enabling EBCE to reach our most vulnerable customers and the municipal and commercial organizations/businesses that serve them.

These resilience initiatives and programs are utilizing budgets from both the Collaborative Procurement and Enhanced NEM areas of the Local Development Business Plan budget. EBCE is using its purchasing power to reduce costs and providing innovative ongoing incentives to increase customer participation.

BAAQMD Critical Facility Project

Budget \$300k

Timeframe: In-Process

EBCE is working through a Bay Area Air Quality Management District Climate Protection grant, and with its local government partners, to: 1) identify critical

municipal facilities designated to serve the community in time of emergency/grid outage, 2) assess the potential for solar and/or BES system deployment, 3) size resilience systems, and 4) develop a procurement pathway that reduces the cost and complexity of project development. Leveraging lessons learned from the Distributed Resource Adequacy and Resilience RFP described above, EBCE will issue an RFP on behalf of its local government partners summer 2020 and aims for system deployment to begin in 2021.

Resource Adequacy and Resilience Procurement

Budget \$50k (estimated cost of ~\$300k/yr will start 2021-2031)

Timeframe: In-Process

This fall EBCE along with two other Community Choice Aggregation (CCA) programs issued a joint Request for Proposals (RFP) seeking residential and commercial sector resilience offerings from solar and Battery Energy Storage (BES) project developers. Through this solicitation, each CCA will partner separately with their selected developer(s) to facilitate deployment of customer sited behind-the-meter systems. EBCE is pursuing a minimum of 10MW of Resource Adequacy from this procurement, resulting in thousands of homes and hundreds of businesses installing storage and becoming resilient. EBCE aims to have a portion of projects deployed by September 2020 with the remaining installed by September 2021. In order to support vulnerable communities, EBCE requires at least 20% of the installations be for low-income residents, medical baseline customers, and residents and businesses located in DACs. EBCE will work closely with selected partners to enroll participants.

Medical Baseline Resilience Program

Budget \$500k

Timeframe: In-Process

While grid outages are inconvenient and expensive for residents and businesses, for individuals who rely on electricity-dependent medical equipment a grid outage can be life threatening. In total 10,000 EBCE customers are on a PG&E Medical Baseline rate, which indicates they require special notification by the IOU when power shut offs may occur. During the most recent PG&E PSPS events in October 2019, more than 1,000 of EBCE's 50,000 accounts affected by the grid outage were Medical Baseline customers. However, this total may not accurately capture all households with individuals that rely on electricity-dependent medical equipment as registration in PG&E's Medical Baseline program is not comprehensive.

In addition, Alameda County local public health and emergency management officials are seeking to develop a systematic way to rapidly identify and assist these residents during prolonged grid outages or disaster. There is broad acknowledgment among stakeholders that understanding the individual needs of these residents and scoping resilient, life-saving risk mitigation solutions would be useful for emergency planning and preparedness efforts. To that end, in November 2019 EBCE's Board of Directors approved a Resolution authorizing \$500,000 in funding to develop the Program for customers with electricity dependent medical equipment. The approved funding will support completion of two primary activities during fiscal year 2020.

Comprehensive Plan: Collaborate with local public health and emergency management agencies, private sector medical providers, and a technical consultant to:

- Determine appropriate pathways for identifying and conducting outreach to medical baseline and electricity dependent (“MB/ED”) residents.
- Record and map all MB/ED residents in Alameda County.
- For residents in Tier 3 or Tier 2 HFTDs and/or households that experienced PSPS shut-offs, document individual MB/ED equipment needs, equipment electricity load, emergency preparedness solutions in place, and unique site conditions.
- Scope technology readiness and cost, pair solutions with individual needs.
- Where in-home solutions are not feasible, scope alternative risk mitigation plan with partner stakeholders.
- Present findings, lessons learned and CP on how and cost to scale solutions to EBCE Board.

Pilot Project: EBCE will partner with a major healthcare provider to identify the highest-risk electricity dependent patients (e.g., children) in the nine county Bay Area. EBCE will work with fellow CCAs who provide electrical service to these households, and the private sector, to co-fund and deploy solar + BES systems in advance of potential 2020 PSPS events. The goal of this pilot is to 1) deliver resilience solutions to high-risk children, 2) establish a standard operating procedure with medical institutions for conducting outreach and providing resilience solution to vulnerable customers.

Municipal RFI for solar + storage on government buildings

Budget \$0 - Staff Time

Timeframe: Planned

Many government buildings have existing rooftop solar energy systems. There are both electrical and financial complications to adding batteries to these installations. To support efficient development of resilience in our Cities, EBCE will release a request for information in Winter 2020 to determine the best approach to retrofitting existing rooftop solar systems with storage. The results of the RFI will be incorporated into the procurement for Solar + Storage for critical facilities (above) that will take place in Spring 2020.

Reducing Utility Disconnections

Budget \$130k

Timeframe: Planned

EBCE has some zip codes with a large proportion of customers either living without power, or under threat of losing power. Eleven zip codes in EBCE’s service area have average disconnection rates ranging from 10 to 15%, compared to PG&E’s rate of 5.4%. In addition to low FERA enrollment overall in northern California, there is evidence of CARE under-enrollment in these zip codes: Close to 50% of the population lives below twice the Federal Poverty Level, but on average just over 30% are

enrolled in CARE. Although EBCE never disconnects a customer for non-payment, we are developing a program to identify the causes of disconnections and test programs to reduce disconnection rates.

DAC Green Tariff /Community Solar

Budget \$40k

Timeframe: Planned

The CPUC has initiated a program to allow CCAs to develop community solar projects to deliver solar energy to CARE customers living in Disadvantaged Communities. EBCE has been allocated 7MW of solar that can be developed within EBCE territory and delivered to CARE customers at a 20% discount to CARE rates. EBCE will develop solar projects for this program and use enrollment in the additional discount as one of the tests to reduce disconnection rates in the Disconnections Program (above).

RE100 for Municipal Electrification

Budget \$150k

Timeframe: Planned

Achieving climate action targets will require a strong push across sectors to reduce GHG emissions. EBCE's programs, listed above, will help our Cities electrify buildings and fleet vehicles while deploying economically viable solar+storage opportunities across buildings. In parallel with these efforts EBCE plans to develop new to develop new renewable projects to serve City electricity demand. The goal is to provide Renewable100 product at Brilliant100 pricing for City meters. Once this product has been tested with our Cities EBCE would then plan to offer this product to other customer classes.

Community Investment Fund

Community Innovation Grants

Budget \$240k

Timeframe: In-Process

In June of 2018 EBCE initiated the first Community Innovation Grant solicitation. The 2019 Community Innovation Grants were for non-profit and community-based organizations to develop projects designed to deliver energy-related social and environmental benefits to residents of Alameda County. Six community-based organizations were awarded \$40,000 to support local programs for a total of \$240k. The projects are in process with expected completion by June 2020.

Government Innovation Grants

Budget \$150k

Timeframe: In-Process

The Government Innovation Grants will support EBCE's municipal partners with funding help achieve EBCE's mission of reducing energy related environmental impacts while providing competitively priced clean electricity. Grants of \$12.5k per city will be available in to support:

1. Cities to pursue additional grant funds
2. City Energy and Environmental staff to add capacity through Fellows or Interns, or,
3. Funding consultant to complete project work

Grant funds needs to support EBCE mission, ie. Energy/Climate programs that benefit the community through reduced energy costs, increase participation in EBCE programs or reduce environmental and/or social impacts of energy.

Community Innovation Grants Round 2

Budget \$240k

Timeframe: Planned Spring 2020

In the Spring of 2020, EBCE will release a second solicitation to support non-profit Community Based Organizations to deliver projects and programs that benefit EBCE customers and communities.

Fiscal Impact

Budget has been approved, there is no additional fiscal impact

Attachments

- A. LDBP Mid-Year update presentation



LOCAL DEVELOPMENT UPDATE

PRESENTED BY: JP ROSS

DATE: JANUARY 22, 2020



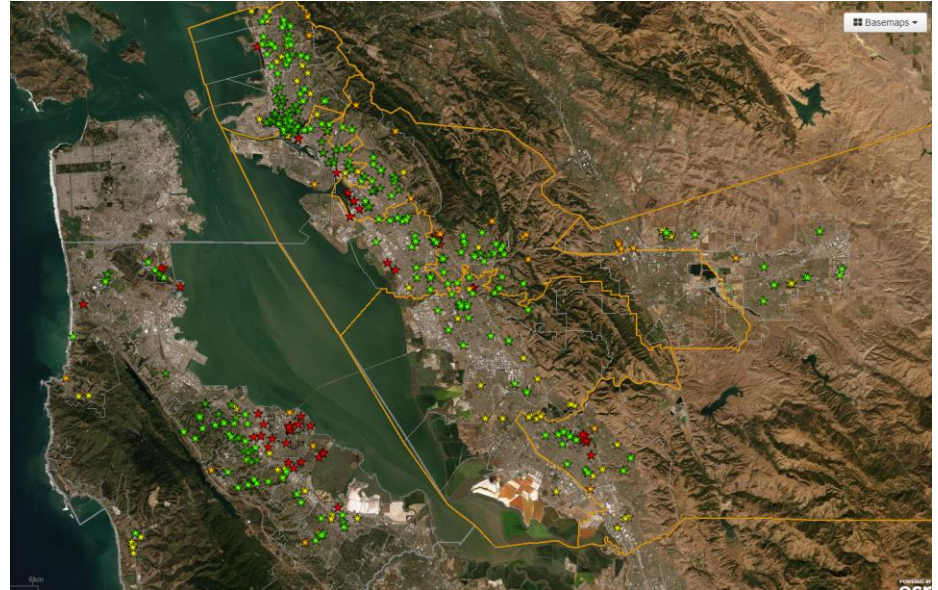
LOCAL DEVELOPMENT BUDGET

- Local development programs have commenced across all program areas
- Resilience initiatives are utilizing funds from Collaborative Procurement and Enhanced NEM LDBP Budgets
- \$1M in funding still to be allocated to future programs and initiatives

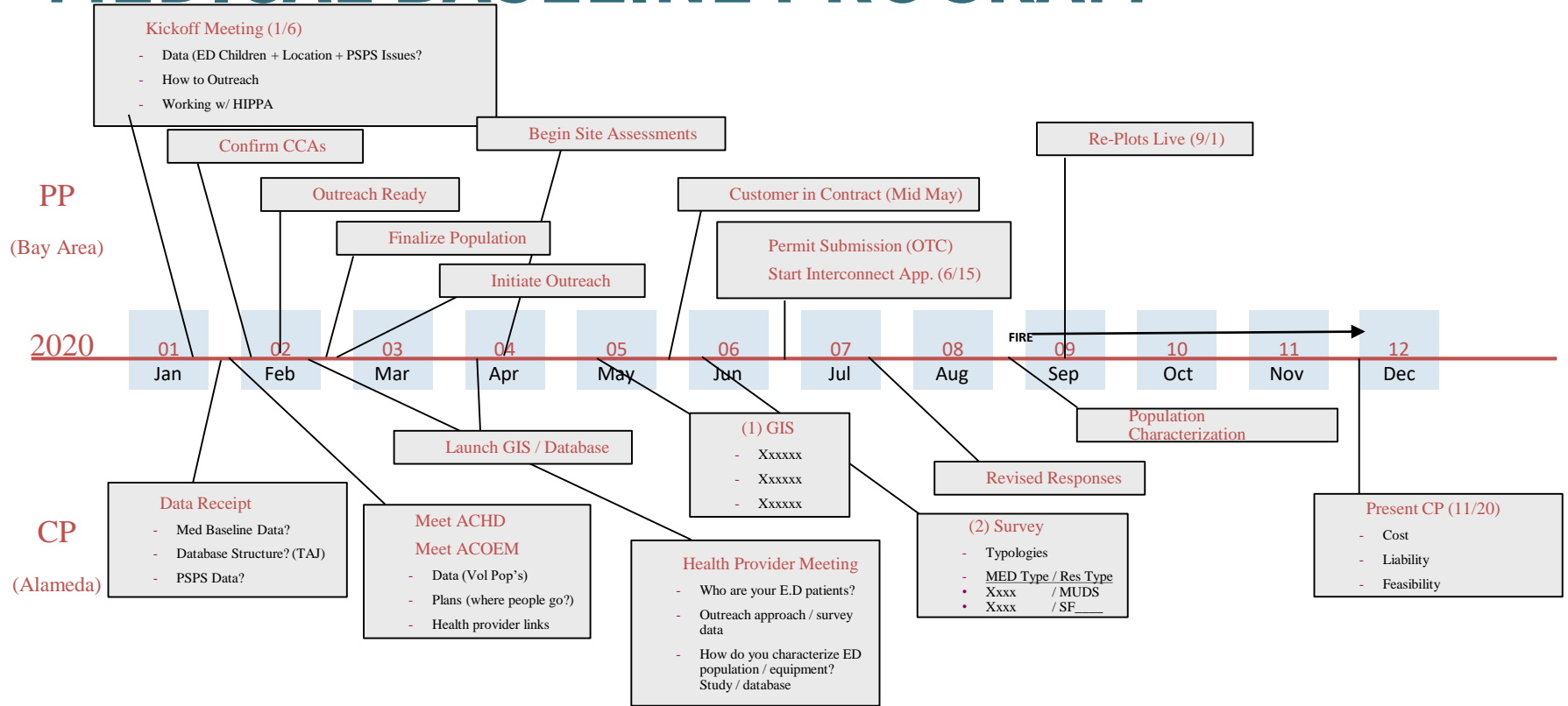
Mid Year Local Development Budget Update January 22, 2020 (\$000)		
Program Areas	Spent/Contracted	Planned
Demand Response	(\$195)	
Energy Efficiency	(\$100)	
Building Electrification	(\$400)	(\$900)
Vehicle Electrification	(\$400)	(\$1,760)
Collaborative Procurement	(\$500)	(\$620)
Enhanced NEM		
Community Investment Fund	(\$400)	(\$250)
Sponsorships/Events	(\$20)	(\$45)
Capital Set Aside	(\$1,200)	
Sub-Total LDBP Operating Funding	(\$3,215)	(\$3,575)
Non Operational Revenue		
BAAQMD Grant	\$150	
Grants and LCFS Credits	\$750	
LDBP Operating Funds*	(\$5,890)	
Additional Local Development Spending		
LDBP Staff Costs	(\$600)	
LDBP Reserve Funds - DC Fast Charging Pilot		(\$1,400)

CRITICAL MUNICIPAL FACILITIES

- 300+ sites confirmed in Alameda County (+200 SMC)
- Site scores established to prioritize projects
- Solar + Storage systems being sized for critical loads at each site
- EBCE will issue RFI and RFP between Feb-July 2020 to assist local governments w/system deployment

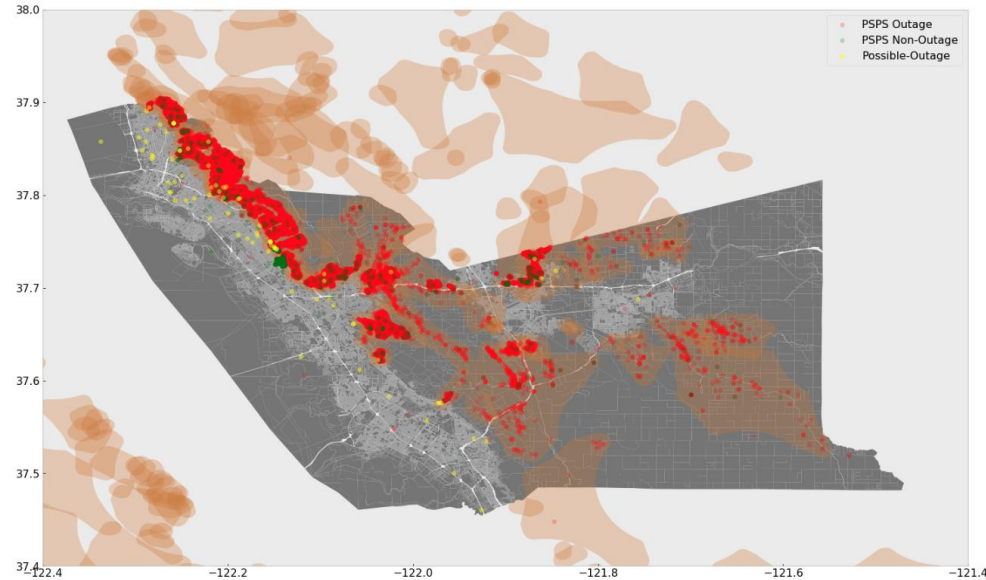


MEDICAL BASELINE PROGRAM



COMMUNITY RESILIENCE + RA

- Issued RFP for solar + storage systems + 10MW RA
- Plan to deploy ~2000 residential and 100s of commercial systems to increase resilience
- All systems will provide backup power
- Prioritizing frontline communities and requiring local workforce
- Customer engagement strategy to be developed with vendor(s)
- Program launch Spring



REACH CODES

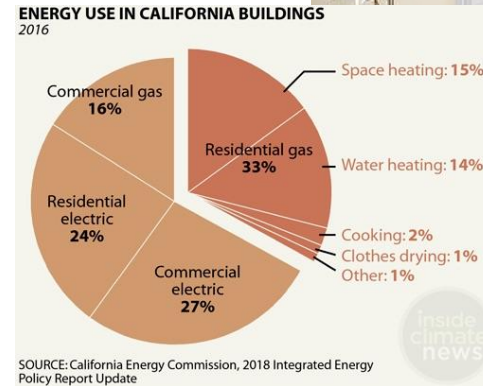
	Energy Efficiency	All-Electric Preferred	All-Electric (R)	All-Electric (NR)	Natural Gas Ban	All-Electric retrofit	Electric Vehicle (EV)	PV	Energy Storage
Albany	EXPLORING (CALGreen)				EXPLORING				
Berkeley		PASSED			PASSED		PRE-EXISTING	PASSED	
<u>Dublin</u>		EXPLORING					EXPLORING		
Emeryville									
Fremont			EXPLORING	EXPLORING		EXPLORING (readiness)	PRE-EXISTING, EXPLORING	PRE-EXISTING, EXPLORING	EXPLORING
Hayward		EXPLORING					EXPLORING	EXPLORING	
Oakland			EXPLORING	EXPLORING			PRE-EXISTING		
Piedmont						EXPLORING		EXPLORING	

TECHNICAL ASSISTANCE FOR ALL-ELECTRIC MULTIFAMILY DEVELOPMENTS



HEAT PUMP WATER HEATER REBATES

- Domestic hot water is major natural gas load
- EBCE Plans to launch a regional Heat Pump Hot Water heater incentive program in March
- Will fund ~\$1,000 incentive to go through StopWaste regional platform
- Additional BayREN incentive will also be available
- Pair with demand response program to explore thermal storage
- Collaborating across regional CCAs to encourage participation

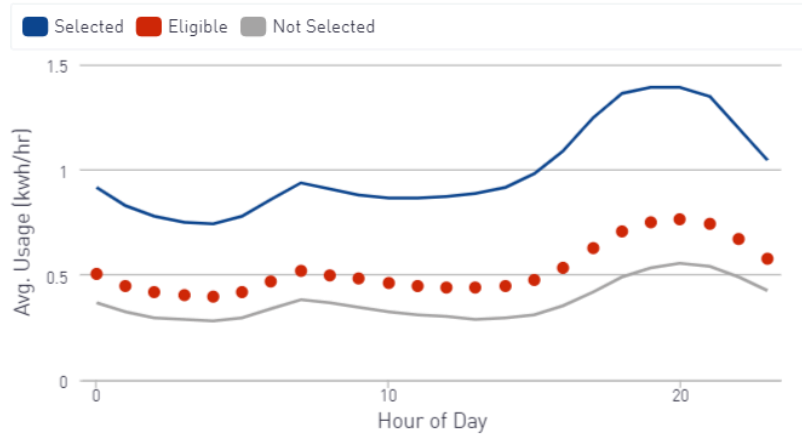


INDUCTION COOKING CAMPAIGN



TARGETING COST EFFECTIVE ENERGY EFFICIENCY OPPORTUNITIES

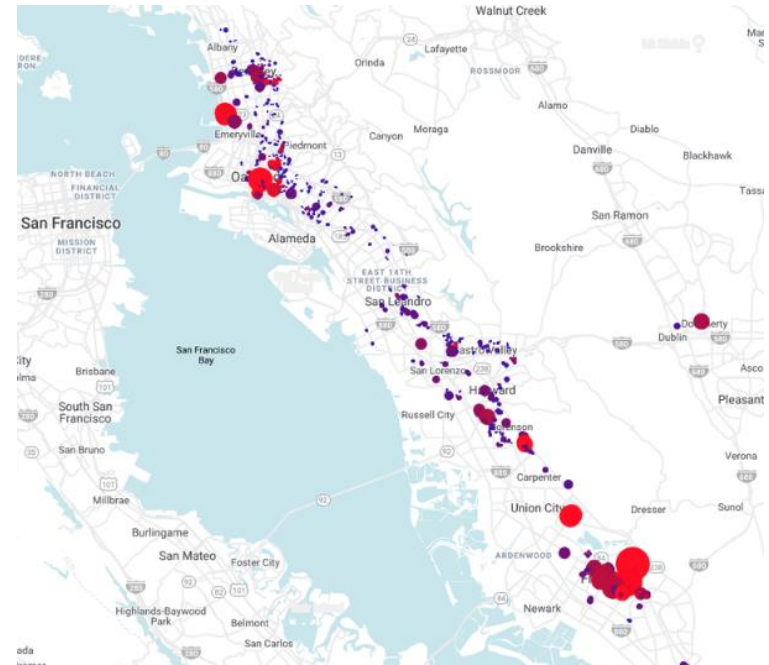
Avg. Annual Load Shape



- Recurve has analyzed hourly output from all EBCE meters as well as gas data to help target energy efficiency and demand response opportunities across our customers
- Can now target outreach to customers who can benefit from demand reduction, while also delivering the highest reduction to EBCE
- Will develop Pay for Performance solicitations for efficiency and demand response

\$40M FOR EV CHARGING IN EBCE TERRITORY

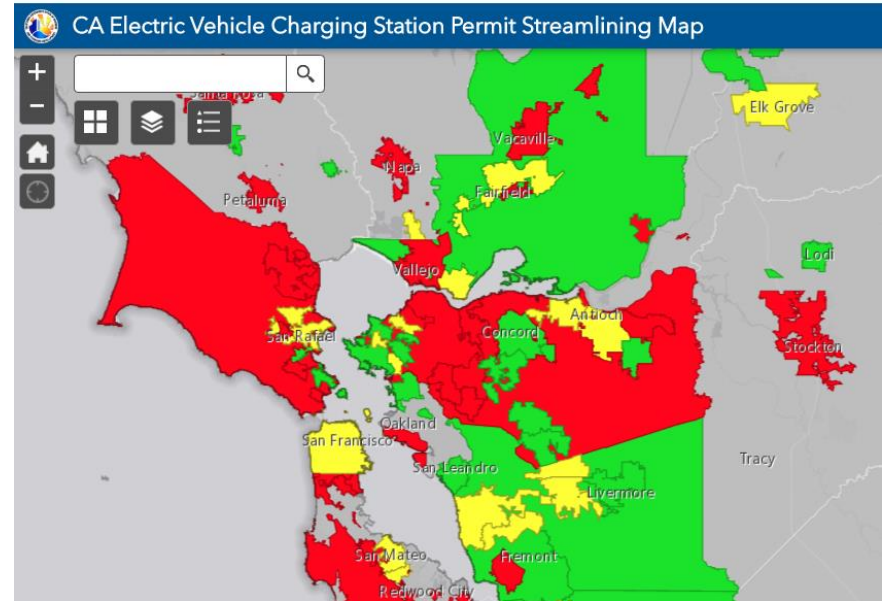
- EBCE is leading development of CA EV Infrastructure Project (CALeVIP) for Alameda County
- CEC incentive program aimed at achieving state mandate of 250,000 EV chargers by 2025
- CEC's commitment est. \$20-30M. EBCE will bring additional \$16M (\$4M/yr.)
- If approved, incentives online 2021-2024
- Eligibility: All Level 2 and DC Fast Charge use cases except single family homes



Multi-Unit Dwelling Hot Spot Map, EBCE 2019

STREAMLINED PERMITTING & CALEVIP

- AB 1236 (2016) requires cities/counties to adopt Ordinance & create checklist by 2017
- EBCE providing assistance to cities to achieve countywide compliance by March 2020
- To access CALeVIP incentive \$ CEC mandates AB 1236 compliance
- Fall 2019 the Governor's Office recognized EBCE with first ZEVE Award



Governor's Office AB 1236 Tracking Map

MEDIUM & HEAVY-DUTY (M/HD) EVs

- Assessing M/HD DMV ownership data
- Working with CALSTART Drive to Zero Initiative to develop M/HD pilot(s) that establish Alameda County as a “beachhead market” for transformation
- Targeting M/HD fleet(s) in preparation for CALeVIP \$
- Supporting Alameda County transit agencies
- Provide TA to school districts; help prep for CALeVIP \$ and other funding opportunities



CHARGING INFRASTRUCTURE DEPLOYMENT

- Develop Public Charging at Municipal Facilities
- Will leverage Local Development Reserve Funding to build chargers and recover revenue from LCFS
- Evaluating Zero Emission Car Share in MUDs with Envoy
- Providing Technical Assistance to Cities for rapid fleet electrification



THANK YOU