



Medical Baseline Resilience Executive Committee Meeting

East Bay Community Energy
March 2021

ARUP
(P) (ps)

Agenda

- Project Briefing (10 min)
- Discussion (10 min)

We're updating you on progress today.

Goal: To support energy resilience for EBCE's Medical Baseline customers

MB Comprehensive Plan & Incentive

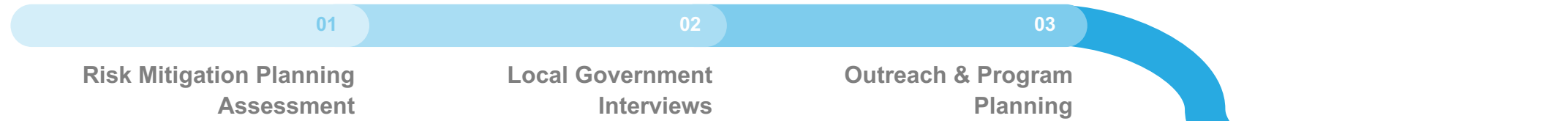
- Document MB/ED customers
- Durable medical device needs
- Energy resilience solutions
- Incentive program approaches

[On Hold] Pilot Project

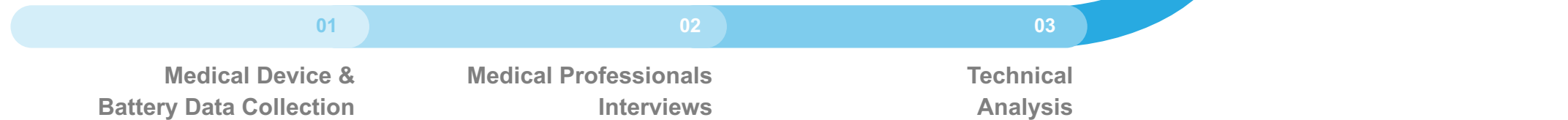
- Work with UCSF Benioff Children's Hospital to provide resilience to high-risk ED pediatric patients
- Note: On-hold long term due to COVID-19 impacts; no timeline available per UCSF

We have assessed two parallel work streams...

Risk Planning Assessment



Technical Assessment



04
Program Assessment

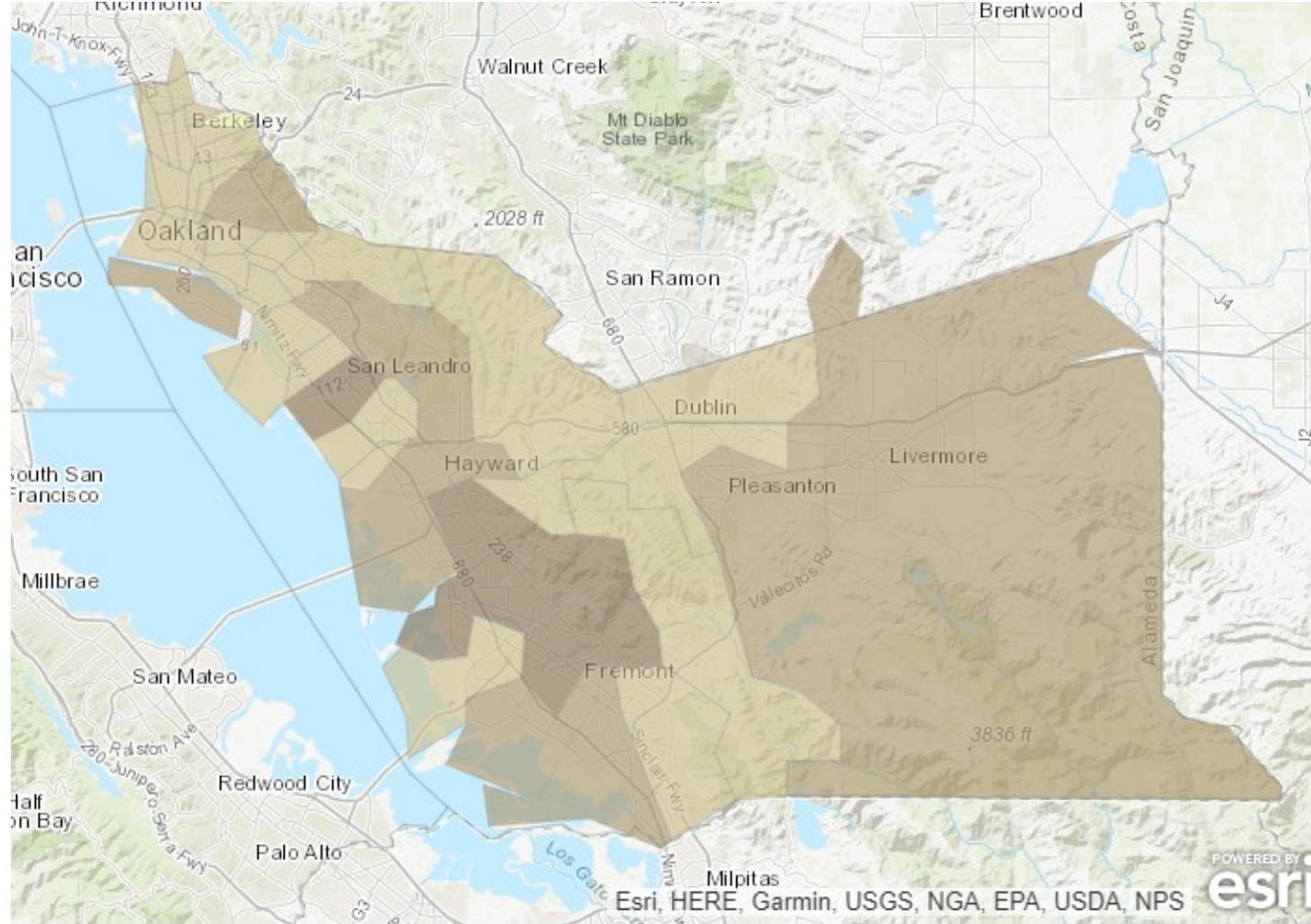
...and talked to valuable partners in our service area.



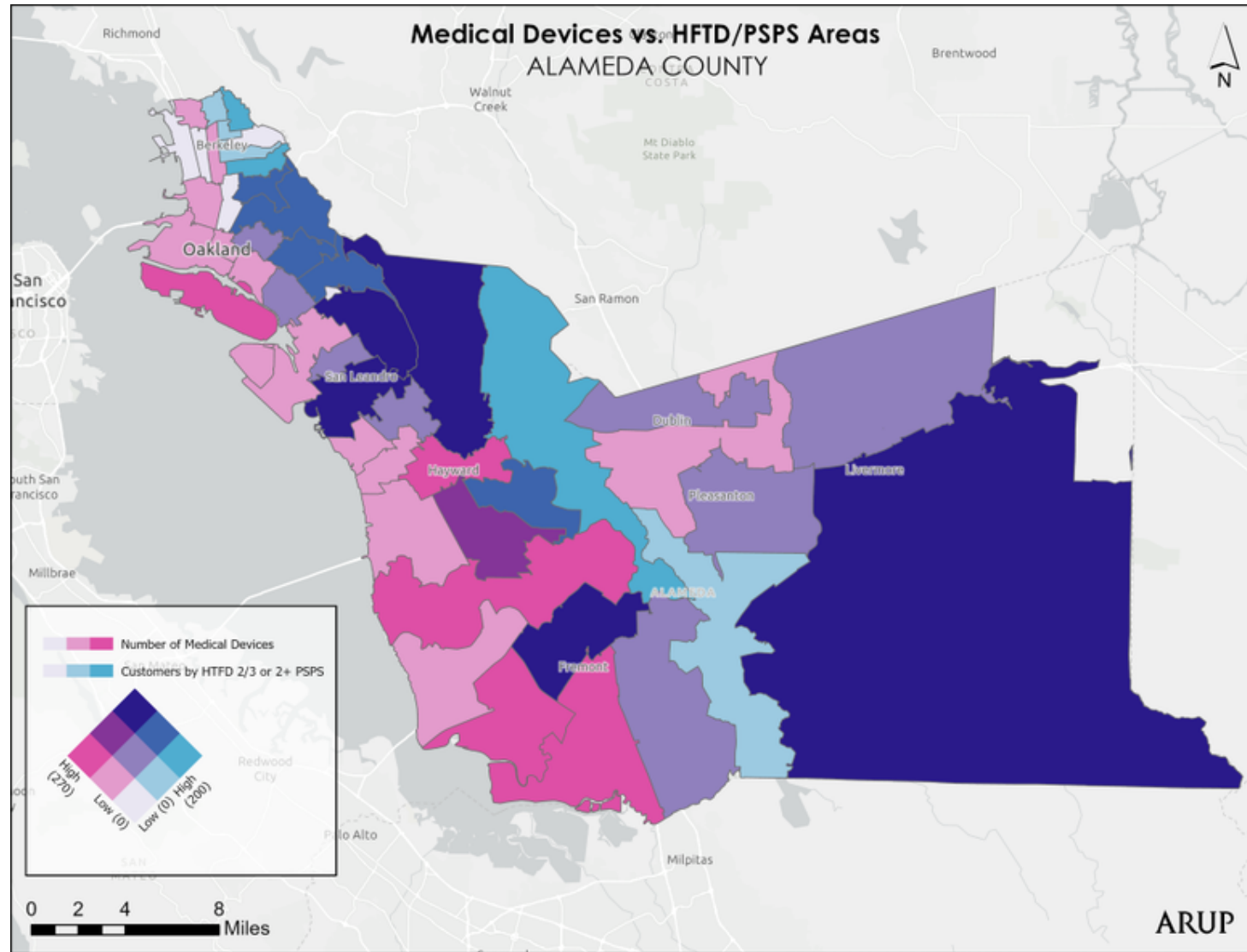
Alameda County Public Health Department
Celebrating Healthy People in Healthy Communities



Pulled rich data about needs in our service territory...



Pulled rich data about needs in our service territory...



...and assessed battery options to backup durable medical devices.

Medical Devices

Ventilator

Oxygen Concentrator

Medical Suction Pump

Enteral Feeding Pump

Dialysis Machine

BiPAP

Defibrillator

Nebulizer System

Electric Bed

CPAP

E-Wheelchair Charger

Battery Backup Systems

Freewire Mobi Gen

Humless Universal 30/8.5 House Battery

Humless Universal 20/8.5 House Battery

Tesla Power Wall Power Wall

LG Chem RESU10H

Humless Home 6.5 Battery Bank

Goal Zero 3kWH Home Energy Storage Kit*

Goal Zero Yeti 3000*

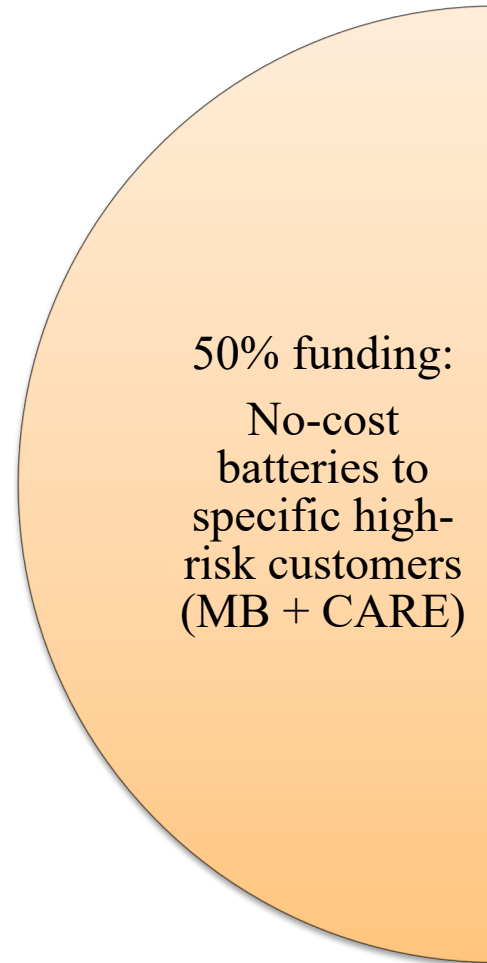
EcoFlow Delta 1300 Power Station

Goal Zero Yeti 500X*

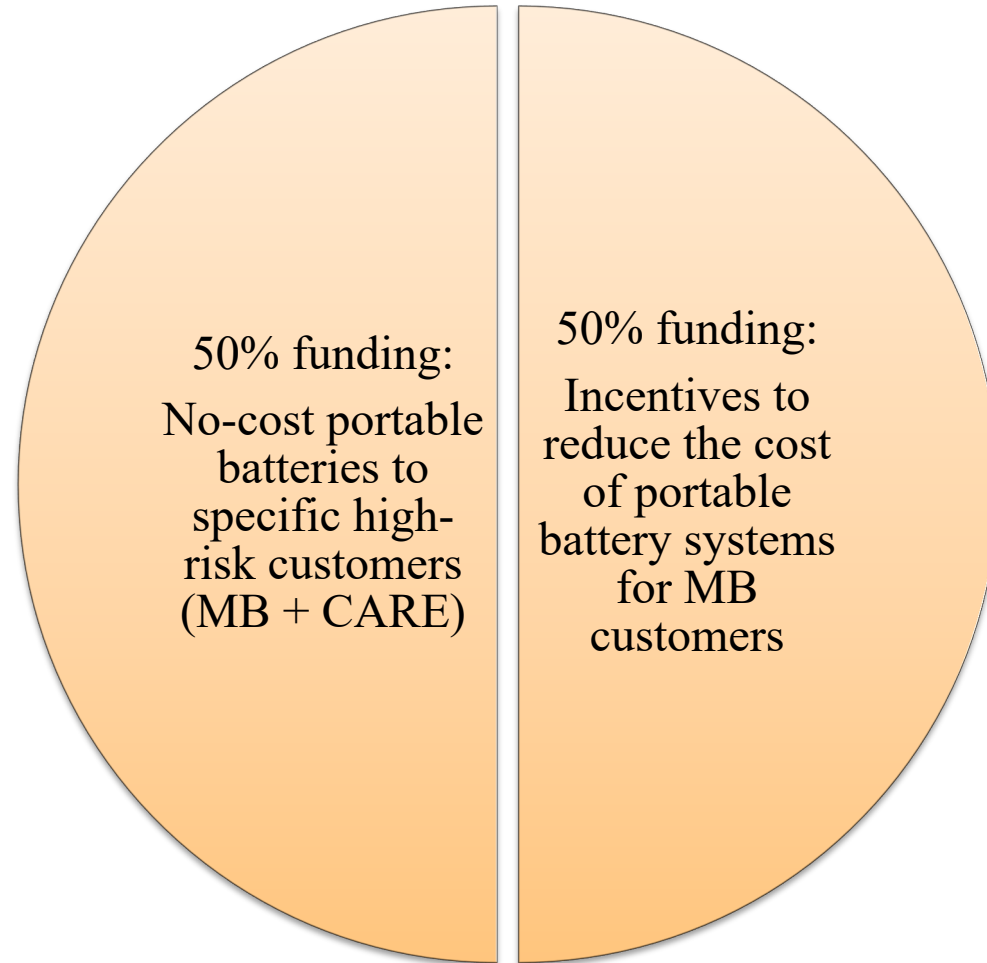
EcoFlow River 370 Power Station

Now we're ready to procure equipment / launch program.

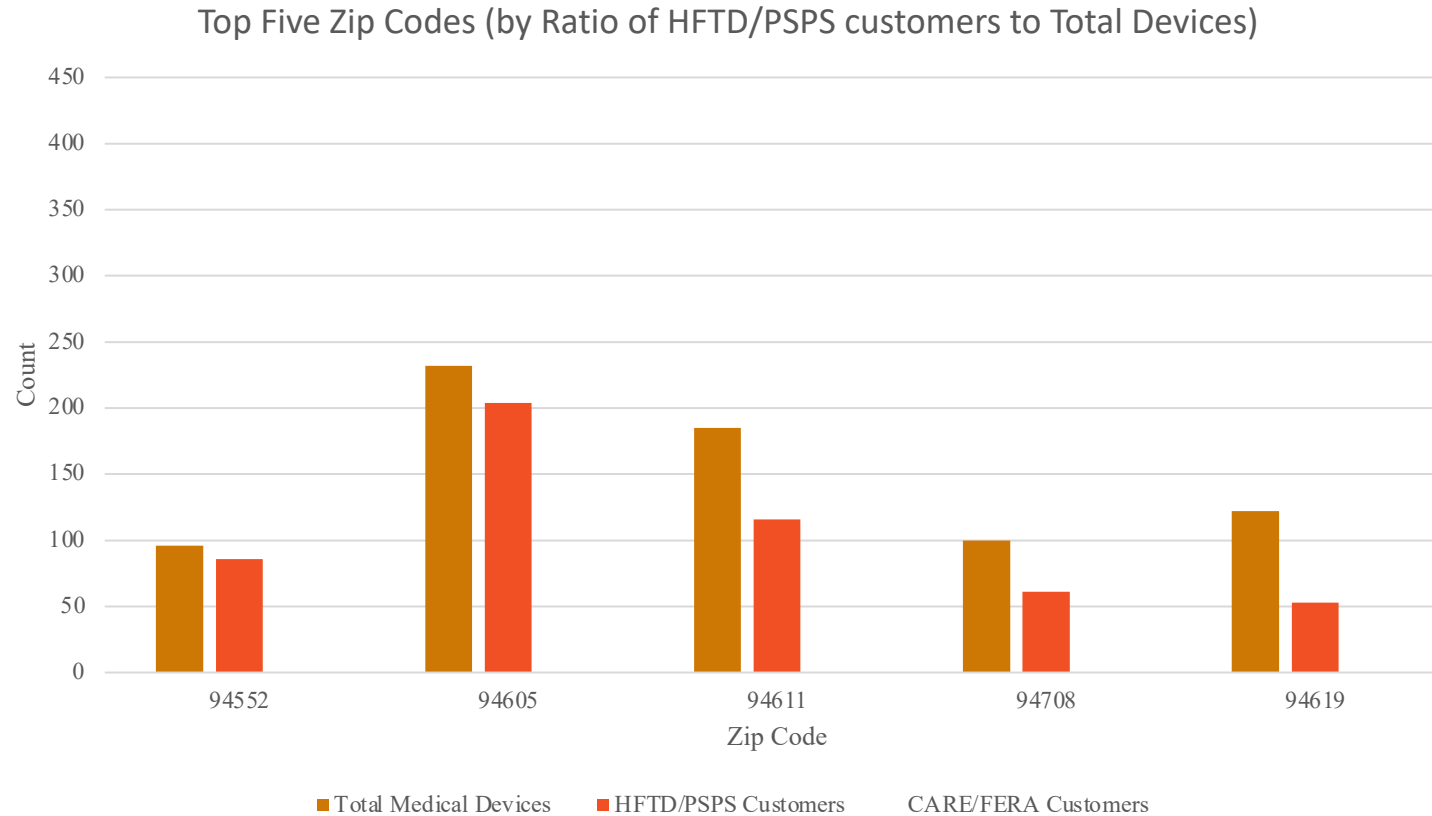
Half of available funds will go to the most vulnerable...



...while the other half sets incentives for MB customers.

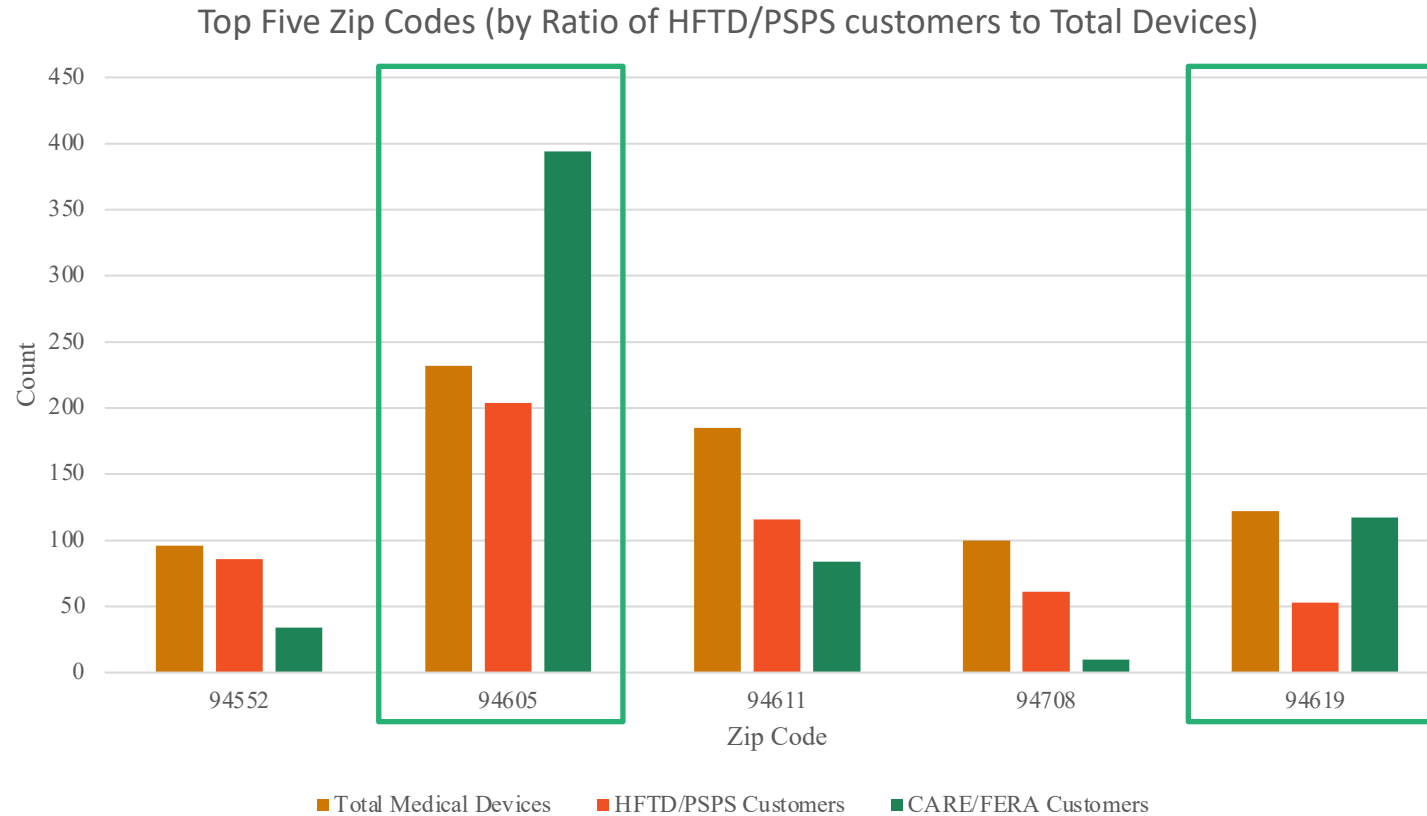


We will start with targeting HFTD zip codes...



The top five (5) zip codes where medical baseline customers were affected by 2+ PSPS events or are within HFTD 2/3. Targeting these zip codes will help support the greatest number of customers potentially at risk of losing power due to fire-related reasons.

...and the overlap with CARE/FERA customers.



The top five (5) zip codes where medical baseline customers were affected by 2+ PSPS events or are within HFTD 2/3. Targeting these zip codes will help support the greatest number of customers potentially at risk of losing power due to fire-related reasons.

We expect to distribute 60-70 batteries.



Goal Zero
Yeti 3000x

1.8 kW/3.0 kWh

Powers*

- Oxygen Concentrator
- Medical Suction Pump
- Dialysis Machine
- BiPAP
- Electric Wheelchair Charger

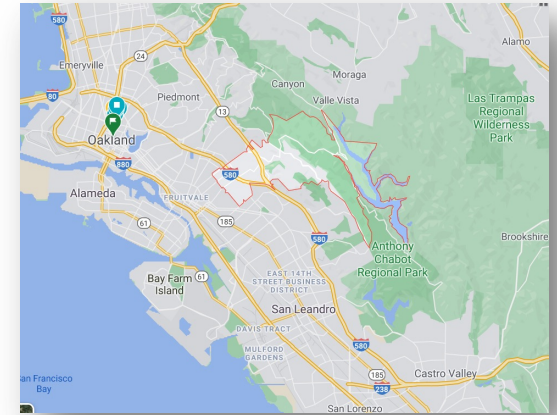
* For 1 day duration, powers a single individual durable medical device listed here

Ex: Level of Need in Single High-Impact Zip (94619)

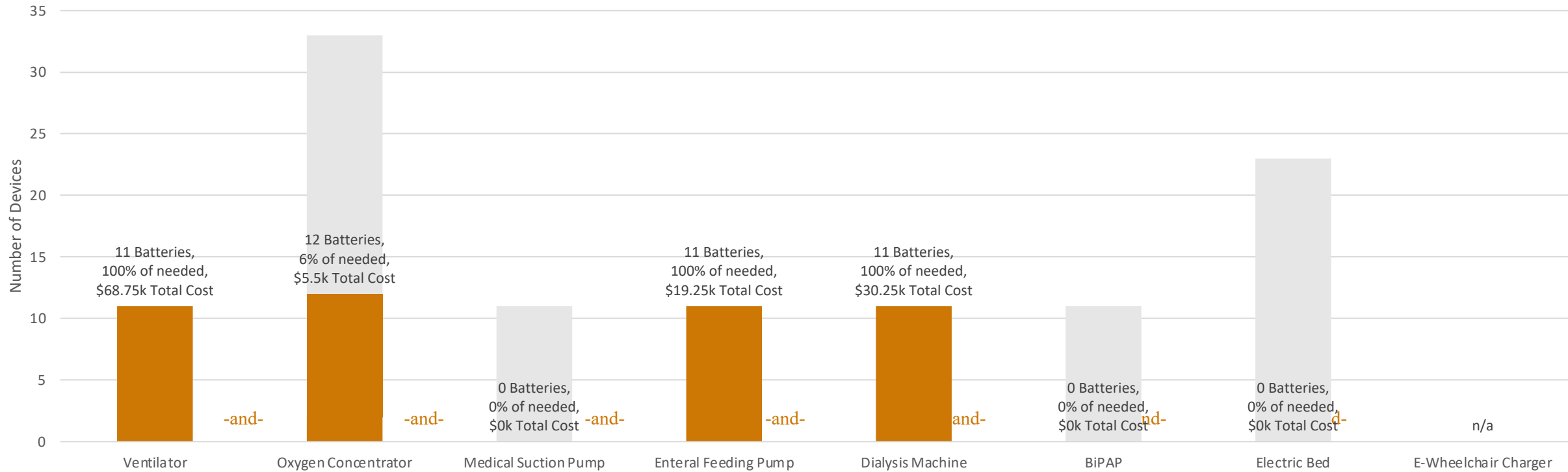
Outage Duration: 1 Day

Funds Available: \$250,000

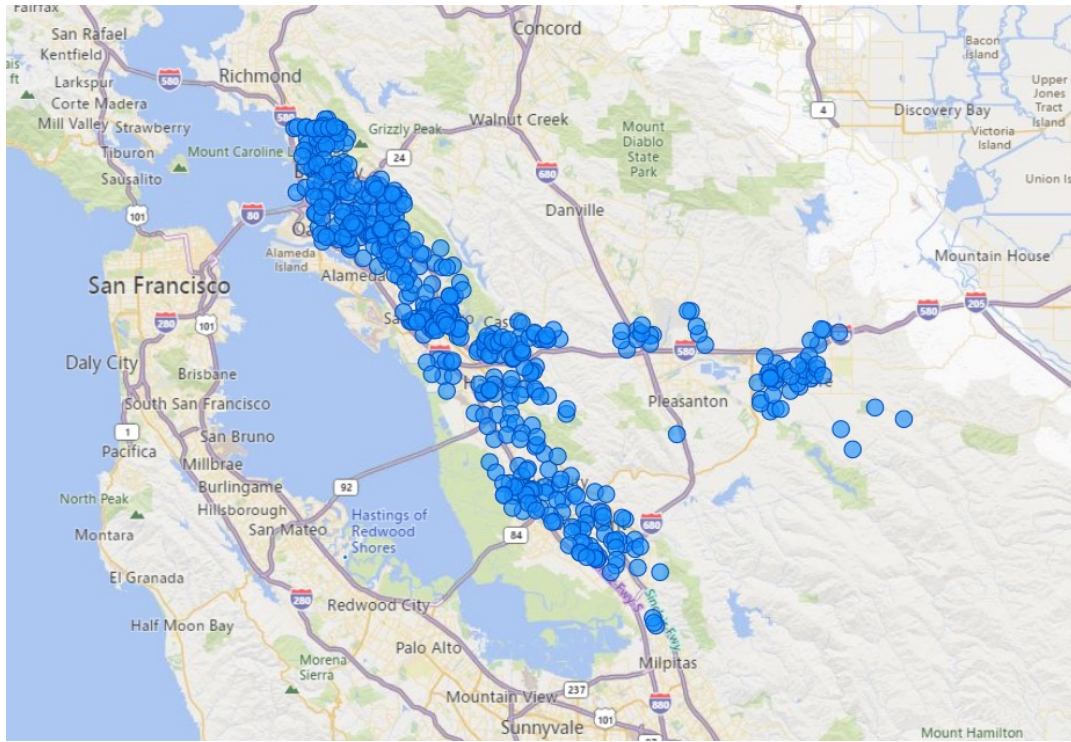
Incentive % of Battery Cost: half at 100%, half at 50%



Battery Procurement by Device (94619)



We also surveyed Medical Baseline customers...

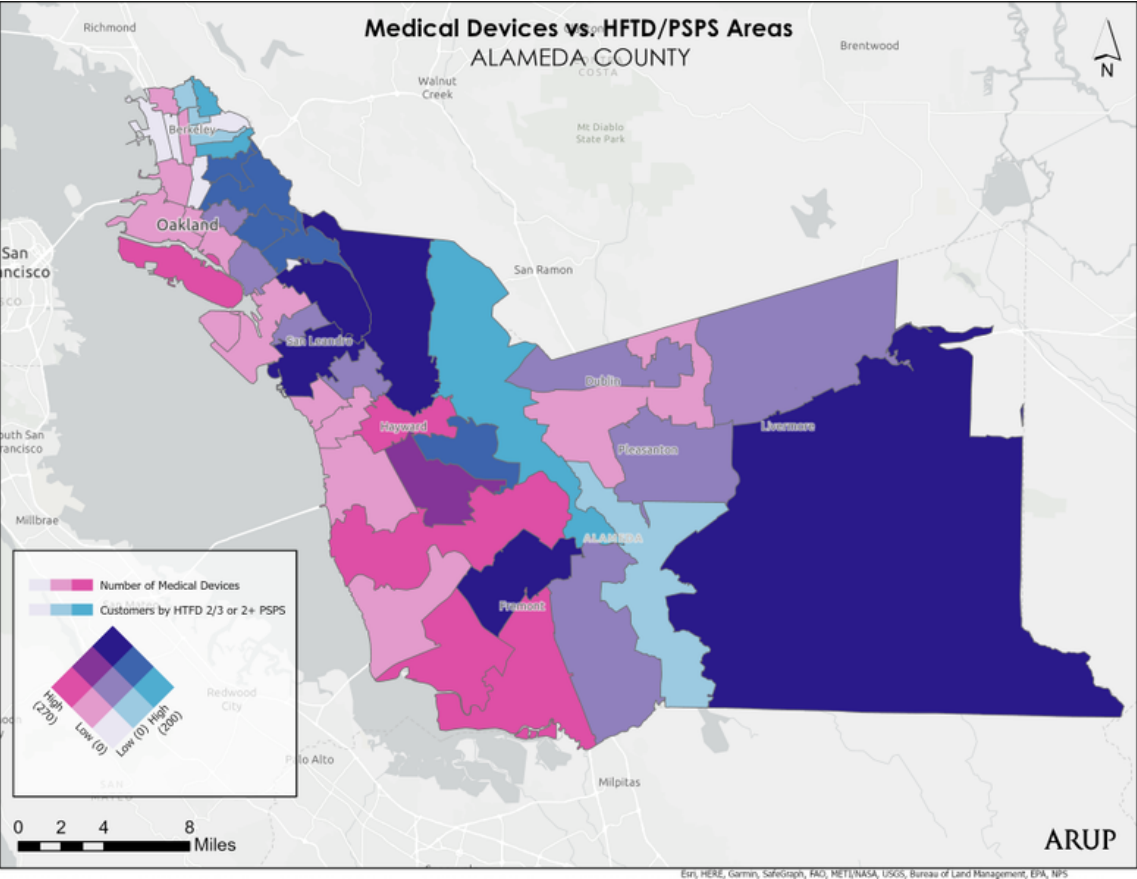


610
Responses

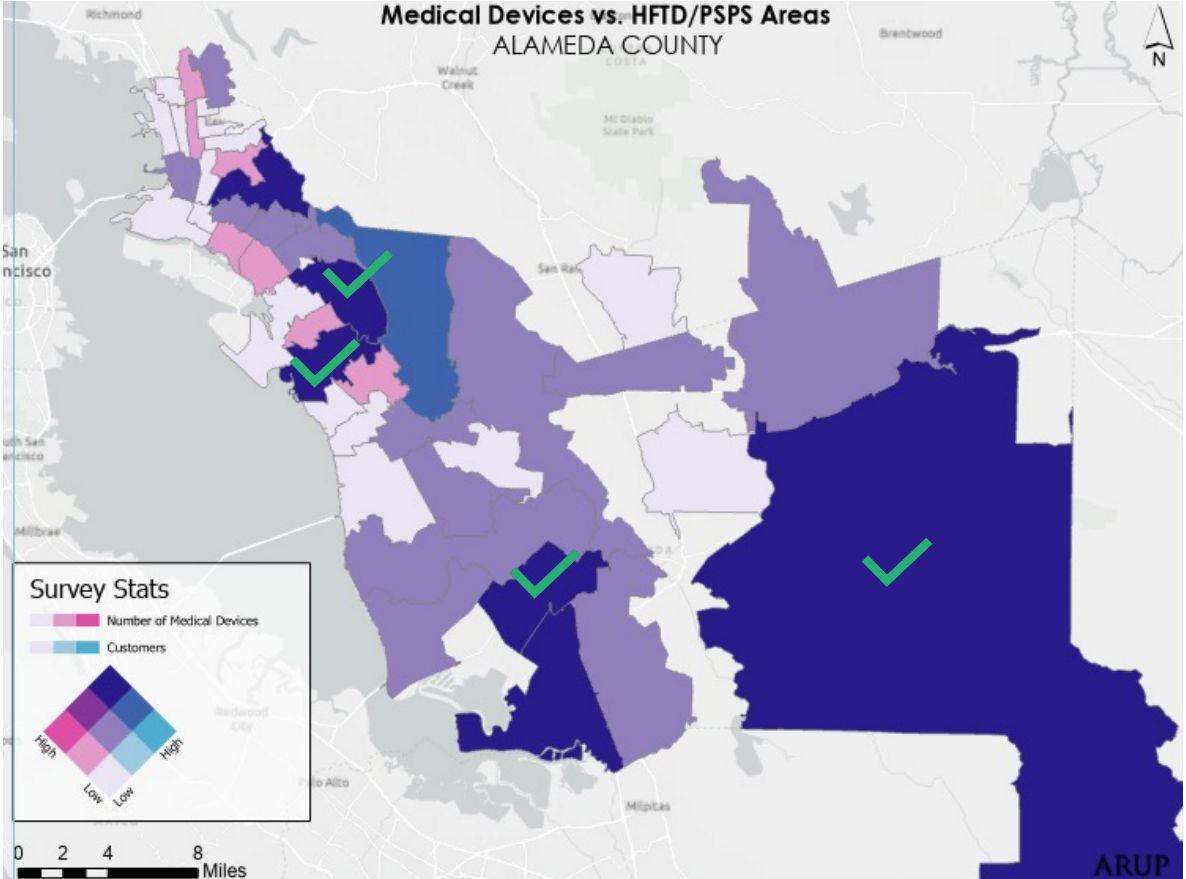
14
Cities

900+
Devices

...and are actively working to apply the data to our procurement strategy.

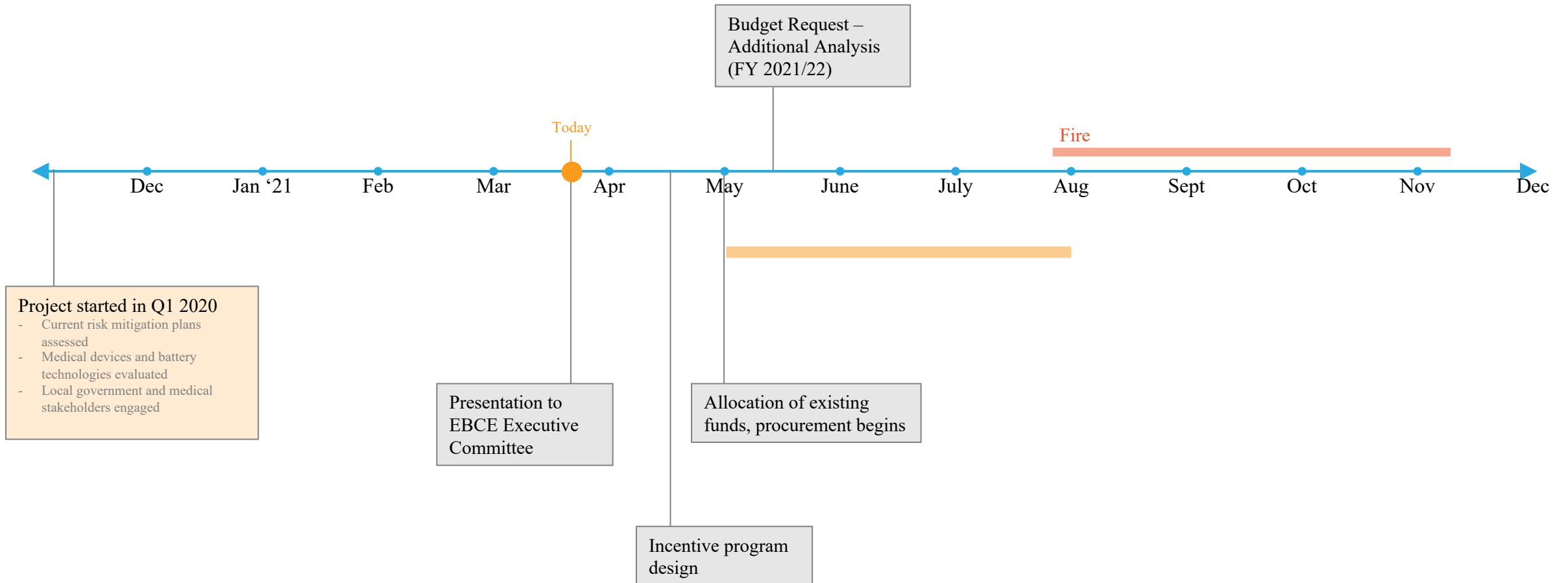


emPOWER Data



Survey Data

Looking forward to implementation.



Discussion