

FEBRUARY 16, 2022

# New Community Inclusion

## Informational Item for Discussion



- **Background**

- EBCE originally focused on Alameda County
- City of Tracy in San Joaquin County requested access to EBCE as an operational CCA

- **Objective**

- Update the board on current interest from Stockton
- Gain feedback on expansion in general

- March 2021: City's CCA Feasibility Study presented to Council
  - Council expressed general interest in CCA
  - Concerns regarding risk/cost of the City launching its own energy agency
  - Joining an operational CCA would help City gain energy options while avoiding start-up costs/risks
- November 2021: City Council CCA Study Session
  - EBCE invited to present and answer questions (CEO + Board Members Martinez & Arriola)
  - Council direction to work with EBCE staff to explore JPA membership
  - Pending Council/EBCE Board approval: tentative enrollment of 2024

- Population: 320,804
- Median household income: \$54,614
- Connections to the Bay Area
  - Rise of super commuters
  - High volume truck routes between Stockton and the Bay Area
- Load as % of current annual EBCE load
  - 29% of current annual EBCE load (Load increase of ~22.6% if Stockton joins)
  - 16.6% of current accounts (Account increase of ~14% if Stockton joins)

### Bay Area exurbs have the greatest share of super commuters

Share of full-time workers who super commute: Top 10 metros

	2005	2017 <sup>F</sup>	Change
1. Stockton-Lodi, CA	7.6%	11.2%	3.6%
2. Modesto, CA	5.4%	8.7%	3.3%
3. Riverside-San Bernardino-Ontario, CA	6.6%	7.7%	1.1%
4. New York-Newark-Jersey City, NY-NJ-PA	5.9%	7.2%	1.3%
5. Bridgeport-Stamford-Norwalk, CT	5.3%	7.1%	1.7%
6. San Francisco-Oakland-Hayward, CA	2.2%	4.8%	2.6%
7. Washington-Arlington-Alexandria, DC-VA-M..	3.5%	4.8%	1.2%
8. Baltimore-Columbia-Towson, MD	3.6%	4.5%	1.0%
9. Allentown-Bethlehem-Easton, PA-NJ	3.9%	4.0%	0.0%
10. Boston-Cambridge-Newton, MA-NH	2.5%	3.7%	1.2%

Source: Census; Apartment List calculations.



Table ES-1 shows that the City's total annual electric load is about 1,980 GWh. This load is spread across almost 111,000 accounts.

**Table ES-1. Potential Stockton CCA Customers and Associated Load**

	Customers	Annual Load (MWh)
Residential	95,910	676,464
Small Commercial	1,413	256,687
Medium Commercial	546	276,810
Large Commercial & Industrial	28	509,970
Other*	8,381	160,828
<b>Total</b>	<b>106,279</b>	<b>1,880,759</b>

\*e.g., streetlights, traffic control, agriculture/pumping.

- Expanding access to community choice to Central Valley
- Already serving Tracy in San Joaquin County
  - Throughout PG&E territory, there is only one active CCA per county
- Opportunity to further diversify EBCE's communities/customer base (e.g., more Ag & lower/medium income)
- Advances EBCE mission to reduce GHG emissions
- Addresses (false) narrative of CCA favoring affluent/coastal communities
- Will likely inspire more of Central Valley to form or join CCAs

## Light Duty Zero-Emission Vehicles: Strategic Priorities

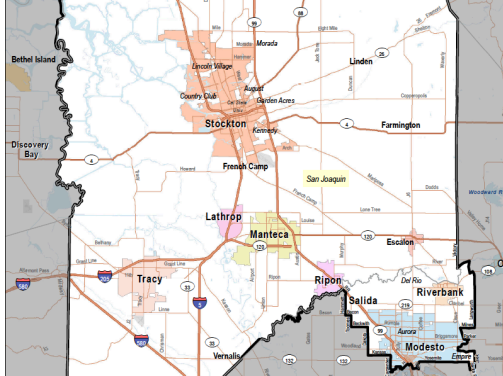
1. Deployment of EBCE owned fast charge network: Infrastructure located in areas with dense concentrations of multifamily properties; enables convenient access to low & moderate-income renters without at-home charging
  2. Municipal fleet electrification: No-cost planning assessment technical support, and offer of fleet Charging-as-a-Service (under development)
- TE policy / funding: EBCE engaged in regulatory / legislative efforts; evaluating state & federal grant opportunities; identification of competitive projects across service area with JPA member cities

## Medium & Heavy-duty: Strategic Priority - Goods Movement

- EBCE's service area among most strategic trade locations in U.S. major freight corridors connect Alameda & San Joaquin counties goods movement infrastructure (e.g., Ports, OAK International Airport, logistics warehousing, fulfillment/arrangement centers, manufacturing, ag)
- Comprehensive EBCE programming underway to accelerate transition to ZE Goods Movement (Class 3-6 x 2030 and Class 7-8 x 2045)
- EBCE received CEC and USEPA grants to plan transition; deployment of fast charging for MD/HD vehicles; rate design

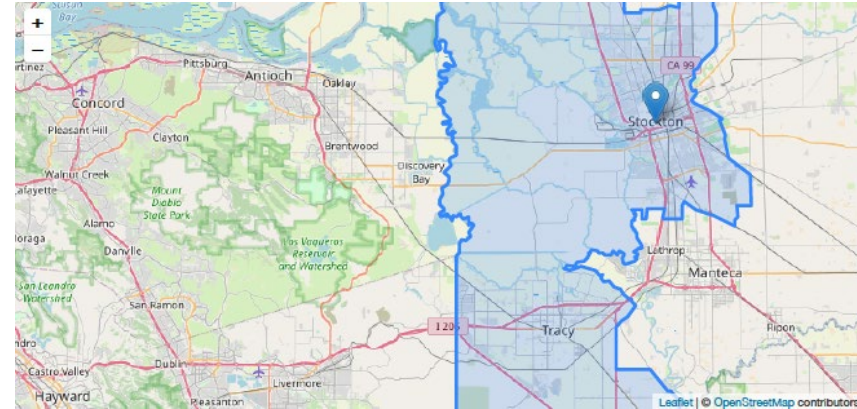
## Sen. Susan Eggman, 5th Dist.

- New Assistant Majority Leader
- Committees: Ag; Budget (Sub 3 HHS Chair); Bus, Prof and Econ Dev; Energy Utilities and Communications; Health; Mil & Vet Affairs; Nat Res & Water



## Asm. Carlos Villapudua, 13th Dist.

- Committees: Ag; Human Services; Rules; Water, Parks, and Wildlife



*\*Both Members' districts include the cities of Tracy and Stockton, and much of San Joaquin County*

- San Joaquin County: if EBCE and the City of Stockton decide to pursue expansion of EBCE to serve Stockton, further extending EBCE service to the rest of San Joaquin County (primarily City of Manteca, City of Lathrop and unincorporated SJC) would make sense to ensure coherence of customer messaging, program design and delivery and brand.
- Beyond ACo/SJC: as more communities across northern California seek to evaluate pursuing Community Choice, EBCE has an important role to play in supporting the success of these endeavors. There are a number of options to consider as these discussions evolve
  - Further expand the EBCE JPA beyond ACo/SJC to integrate new communities
  - Provide turnkey 'Powered by EBCE' service to allow communities to form their own CCA but benefit from the scale and expertise of EBCE (ranging from outsourced power procurement to marketing and account services)
  - Provide limited technical services to communities during the CCA formation process
- Next Steps: the immediate next steps for EBCE are to consider how/whether expansion into Stockton (and the rest of SJC) makes sense. From this point, developing a strategic plan and presenting it to the Board in Q4 2022 for how to engage with other communities to guide future discussions is a logical next step.



- **January 2022:** Requested additional data from PG&E for load analysis
- **February/March 2022\*:** Local Staff Memo to Stockton City Council
- **March/April 2022\*:** Council action regarding EBCE JPA membership
  - Requires two votes on the ordinance and resolution to join JPA
- **April/May/June 2022\*:** EBCE Board membership consideration of Stockton
- **December 2022:** Submit Implementation Plan addendum to CPUC
- **2023:** One-year wait period
- **2024:** earliest possible Stockton enrollment

*\* Subject to change*