



## Marketing, Regulatory and Legislative Subcommittee Meeting

Friday, September 9, 2022  
12:00 pm

Please click the link below to join the webinar:

<https://us02web.zoom.us/j/82375344642>

Or join by phone by dialing: +1 669 900 6833 or 888 475 4499 (Toll Free)

Webinar ID: 823 753 4642

*Consistent with the provisions of Assembly Bill 361, the East Bay Community Energy Board of Directors and standing committee meetings will be held via teleconference/videoconference during the current State of Emergency. Any interested member of the public can participate via Zoom by utilizing the link listed above or telephonically by utilizing the dial-in information listed on this agenda.*

*Meetings are accessible to people with disabilities. Individuals who need special assistance or a disability-related modification or accommodation to participate in this meeting, or who have a disability and wish to request an alternative format for the meeting materials, should contact the Clerk of the Board at least 2 working days before the meeting at (510) 906-0491 or [cob@ebce.org](mailto:cob@ebce.org).*

*If you have anything that you wish to be distributed to the Marketing, Regulatory and Legislative Subcommittee, please email it to the clerk by 5:00 pm the day prior to the meeting.*

### 1. Welcome & Roll Call

### 2. Public Comment

*This item is reserved for persons wishing to address the Marketing, Regulatory and Legislative Subcommittee on any EBCE-related matters that are not otherwise on this meeting agenda. Public comment on matters listed on the agenda shall be heard at the time the matter is called. As with all public comment, members of the public who wish to address the Marketing, Regulatory and Legislative Subcommittee are customarily limited to three minutes per speaker. The MRL Chair may increase or decrease the time allotted to each speaker.*

### 3. Approval of Minutes from June 3, 2022

### 4. Regulatory Update (Informational Item)

EBCE is committed to protecting our environment and is proud to be a [Certified California Green Business](#)

Update on regulatory items of interest to EBCE.

**5. Legislative Update (Informational Item)**

Update on legislative items of interest to EBCE and bill tracker.

**6. Marketing and Account Services Update (Informational Item)**

Update on Marketing and Account Services

**7. Committee Member and Staff Announcements including requests to place items on future Board agendas**

**8. Adjournment to November 4, 2022.**



## Draft Minutes

### Marketing, Regulatory, Legislative Subcommittee Meeting

Friday, June 3, 2022

12:00 pm

<https://us02web.zoom.us/j/82375344642>

Or join by phone:

Dial (for higher quality, dial a number based on your current location):

US: +1 669 900 6833 or +1 346 248 7799 or +1 253 215 8782 or +1 301 715 8592 or  
+1 312 626 6799 or 888 475 4499 (Toll Free) or 877 853 5257 (Toll Free)

Webinar ID: 823 7534 4642

*Meetings are accessible to people with disabilities. Individuals who need special assistance or a disability-related modification or accommodation to participate in this meeting, or who have a disability and wish to request an alternative format for the meeting materials, should contact the Clerk of the Board at least 2 working days before the meeting at (510) 906-0491 or [cob@ebce.org](mailto:cob@ebce.org).*

*If you have anything that you wish to be distributed to the Committee, please email it to the clerk by 5:00 pm the day prior to the meeting.*

#### 1. Welcome & Roll Call

Directors: Kumagai (Dublin), Munro (Livermore), and Chair Patino (Union City)

Excused: Tiedemann (Albany), Vice-Chair Harrison (Berkeley)

#### 2. Public Comment

*This item is reserved for persons wishing to address the Committee on any EBCE-related matters that are not otherwise on this meeting agenda. Public comments on matters listed on the agenda shall be heard at the time the matter is called. As with all public comment, members of the public who wish to address the Committee are customarily limited to three minutes per speaker and must complete an electronic [speaker slip](#). The Committee Chair may increase or decrease the time allotted to each speaker.*

There were no speakers for public comment.

#### 3. Approval of Minutes from April 1, 2022

Director Kumagai motioned to approve the minutes. Director Munro seconded the motion which passed 3/0. Excused: Vice Chair Harrison and Director Tiedemann.

**4. Regulatory Update (Informational Item)**

Recommendation: Update on regulatory activities.

**The Committee discussed:**

- How adopting the 24-hour slice-a-day RA framework while rejecting the hourly resource/load trading leads to a much larger amount of procurement of new resources.

**There were no speakers for public comment.**

**5. Legislative Update (Informational Item)**

Recommendation: Update on pending legislation.

**The Committee discussed:**

- How any of the proposed bills might affect EBCE's proposed budget.

**There were no speakers for public comment.**

**6. Committee Member and Staff Announcements including requests to place items on future Board Agendas**

**There were no announcements or requests for future agenda items.**

**7. Adjournment to Friday, September 9, 2022**

JUNE 3, 2022

# Regulatory Update



# Regulatory Highlight

PG&E 2023 Energy Resource Recovery Account (ERRA) & Power Charge Indifference Adjustment (PCIA) Forecast filing

# 2023 ERRA Forecast

## ☐ The ERRA Forecast proceeding:

- Sets the bundled generation rate for PG&E customers
- Sets the PCIA rate
- Rates *may* go into effect as early as January 1, 2023

## ☐ PG&E filed for new generation/PCIA rates on May 31, 2022

- Reduces PG&E bundled generation rates by ~2 cents/kwh
- Reduces the PCIA rate by ~½ cent/kwh
- Net effect would be ~1½ cent/kwh reduction in headroom year/year
- Subject to litigation and an update in October

SEPTEMBER 9, 2022

# Legislative Update





# Key Deadlines for the 2022 State Legislative Year

- 1/3: Legislature reconvened
- 1/10: Governor submitted budget
- 1/31: Deadline to move 2-year bills out of 1<sup>st</sup> house
- 2/18: Bill introduction deadline
- 4/29: Policy cmtes to move fiscal bills to fiscal cmtes (1st house)
- 5/6: Policy cmtes to move nonfiscal bills to floor (1st house)
- 5/20: Fiscal cmtes must move bills to floor (1st house)
- 5/27: Last day for bills to be passed out of 1st house
- 6/15: Budget bill must be passed
- 7/1: Policy cmtes to meet and report bills (2nd house)
- 8/12: Fiscal cmtes to move bills to floor (2<sup>nd</sup> house)
- 8/31: Last day for each house to pass bills
- 9/30: Last day for Governor to sign/veto bills

# State Bill Tracker - Assembly

| Bill #                  | Author     | Description   | Sponsor   | Status                     | EBCE Position                |
|-------------------------|------------|---|-----------|----------------------------|------------------------------|
| <a href="#">AB 1814</a> | Grayson    | Authorizes CCAs to file applications for PUC programs and investments to accelerate widespread transportation electrification.  | CalCCA    | Author withdrawn           | <b>SUPPORT</b>               |
| <a href="#">AB 1960</a> | Villapudua | Encourages the Senate and the Governor to consider permanent residents of northern, southern and the central valley regions of the state to provide more regional diversity among CPUC commissioners.   |           | Vetoed by Gov 6/21         | <b>SUPPORT</b>               |
| <a href="#">AB 2061</a> | Ting       | Requires data disclosure on EV charging station availability for stations using public or ratepayer money and requires the CEC to assess reliability and equitable access issues.   | Flo       | Passed 8/30                | <b>WATCH</b>                 |
| <a href="#">AB 2667</a> | Friedman   | Establishes and requires CEC to administer state IDER Fund to incentivize eligible resources to support consumer adoption of clean DERs, creates a system to award incentives.  | NRG / EDF | Failed Sen floor vote 8/30 | <b>OPPOSE UNLESS AMENDED</b> |
| <a href="#">AB 2765</a> | Santiago   | Creates a new taxpayer-funded fund to cover the costs of CPUC Public Purpose Programs including energy efficiency and conservation, and arrearage management, instead of continuing to rely on customer delivery rates. Reverts to utility ratepayers if fund isn't sufficiently funded by the legislature. Excludes CARE/FERA. | Sempra    | Held in Asm Approps Cmte   | <b>SUPPORT</b>               |

# State Bill Tracker - Senate

| Bill #                  | Author    | Description   | Sponsor                                     | Status                   | EBCE Position                |
|-------------------------|-----------|---|---|--------------------------|------------------------------|
| <a href="#">SB 1020</a> | Laird     | Sets interim targets for meeting renewable/zero-carbon goals: 90% by end-2035, 95% by end-2040; 100% for state agencies by 2030. State agencies can comply through their LSE, but LSE procurement for the state agency must meet certain criteria. Establishes new fund to support the costs of decarbonization, clean energy, and wildfire mitigation activities with funding sources outside of electricity rates. Establishes new nonprofit public benefit corporation to administer the fund. | Senate Climate Change Working Group         | Passed 8/30              | <b>SUPPORT IF AMENDED</b>    |
| <a href="#">SB 1063</a> | Skinner   | Authorizes the CEC to make standards for energy- and water-efficient appliances effective sooner than one year after adoption if there's a finding of good cause.   | CEC   | Passed 8/15              | <b>SUPPORT</b>               |
| <a href="#">SB 1112</a> | Becker    | Requires energy suppliers (including CCAs) offering decarb programs to record a decarb charge notice, then notice of full cost recovery, then notice of charge removal with the project's county.   |   | Passed 8/29              | <b>SUPPORT</b>               |
| <a href="#">SB 1158</a> | Becker    | Changes the Power Source Disclosure rules to require utilities and CCAs to report comparisons of their energy and capacity purchases with their electricity demand on an hourly basis including the associated GHG emissions.   |   | Passed 8/31              | <b>WATCH</b>                 |
| <a href="#">SB 1385</a> | Cortese   | Establishes a new 1,500 MW multifamily housing local solar program that requires each large electrical corporation (IOU) to construct solar and storage systems connected to the distribution system in front of the customers' meters on or near multifamily housing.  | CA State Assoc of Electrical Workers / CCUE | Held in Asm Approps Cmte | <b>OPPOSE UNLESS AMENDED</b> |
| <a href="#">SB 1393</a> | Archuleta | Requires local jurisdictions to consider CEC guidance before mandating that retrofits to a bldg. must upgrade fossil appliances to electric and to file records with CEC.   |   | Held in Asm Approps Cmte | <b>OPPOSE</b>                |

# Federal Bill Tracker

| Bill #                    | Author  | Description   | Status                   | Recommended EBCE Position |
|---------------------------|---------|---|--------------------------|---------------------------|
| <a href="#">H.R. 5376</a> | Yarmuth | Authorize renewable energy tax breaks including extending and expanding the Investment Tax Credit (ITC) and Production Tax Credit (PTC), as well as other clean energy-friendly provisions including building decarb incentives, electric vehicle tax credits, and environmental justice incentives | Signed by President 8/16 | <b>SUPPORT</b>            |

SEPTEMBER 9, 2022

# Marketing and Account Services Update to MRL Committee



# Marketing & Account Services Updates

- Team Expansion
- DRAFT 2021 Power Content Label Mailer
- October Renewable 100 Transition

# New Hires and Open Roles

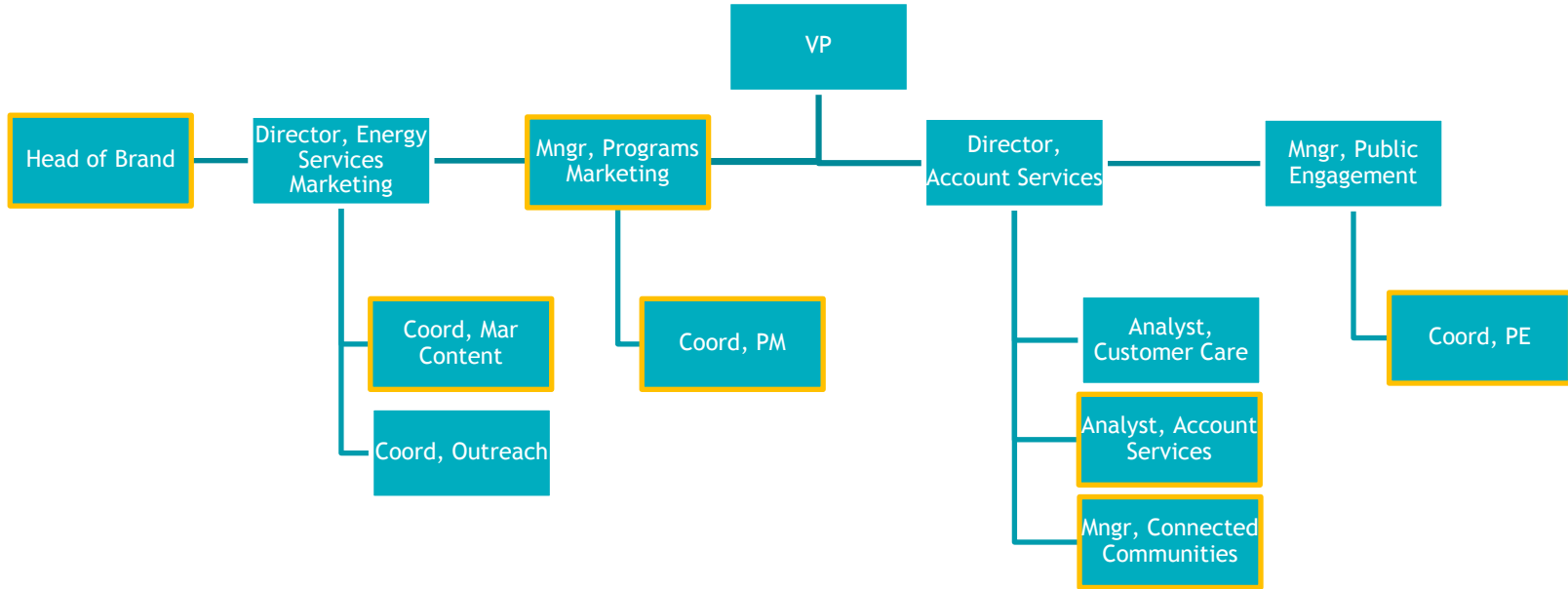
## Recent New Hires:

- Sofi Hecht – Marketing Content Coordinator
- Katia Sievert – Programs Marketing Coordinator
- Theresa McDermit – Brand

## Open Roles:

- Connect Communities Manager
- Account Services Analyst

# MAS Team



New in last year



# Overview of Rate PCL vs JRM

## Power Content Label Mailer (PCL)

- Required by CEC
- Sent by October 1 each year
- Does not include rate comparison
- Compares power content of EBCE to State
- Goes to EBCE customers served in 2021 via email and mail

## Joint Rate Mailer (JRM)

- Required by CPUC
- Deadline is July 1
- Rate and power content comparison with PG&E
- Goes to all EBCE-eligible customers via email or mail

# DRAFT – 2021 Power Content Label Mailer

**2021 Power Content Labels | East Bay Community Energy**

| Marketwide rate plan by month | Residential | Small Business | Large Business | Electric Vehicle |
|-------------------------------|-------------|----------------|----------------|------------------|
| Residential                   | 100.0%      | 100.0%         | 100.0%         | 100.0%           |
| Small Business                | 100.0%      | 100.0%         | 100.0%         | 100.0%           |
| Large Business                | 100.0%      | 100.0%         | 100.0%         | 100.0%           |
| Electric Vehicle              | 100.0%      | 100.0%         | 100.0%         | 100.0%           |

**Residential Rates**

| Rate Plan        | Rate   | Rate   | Rate   | Rate   |
|------------------|--------|--------|--------|--------|
| Residential      | 100.0% | 100.0% | 100.0% | 100.0% |
| Small Business   | 100.0% | 100.0% | 100.0% | 100.0% |
| Large Business   | 100.0% | 100.0% | 100.0% | 100.0% |
| Electric Vehicle | 100.0% | 100.0% | 100.0% | 100.0% |

**EAST BAY COMMUNITY ENERGY**  
 2021 Residential use  
 (includes all rates)  
 Berkeley, CA 94702

Residential Rates  
 2021 at address 15  
 Berkeley, CA 94702

**Learn more about EAST BAY COMMUNITY ENERGY**  
[www.eastbayenergy.com](#)

## GREEN POWER

**325MW FROM SOLAR AND WIND**

packaging of energy for East Bay residents in which we invest in renewable energy projects for the year 2021-2022. An additional 100MW of energy will be purchased in 2022.

**Learn more about EAST BAY COMMUNITY ENERGY at [www.eastbayenergy.com](#)**

## LOW RATES

**\$19M IN PROJECTED ANNUAL SAVINGS**

relative to PG&E rates in fiscal year 2020-2021 for the 25 monthly average EBC's cost of service relative to PG&E's cost of service.

**Learn more about EAST BAY COMMUNITY ENERGY at [www.eastbayenergy.com](#)**

**SUPPORTING OUR COMMUNITY**

## Powering a brighter tomorrow with green power, low rates, and local investment.

**15,000+ HOMES PER YEAR** covered by EBC's renewable energy.

**Learn more about EAST BAY COMMUNITY ENERGY at [www.eastbayenergy.com](#)**

## MAKING A DIFFERENCE, TOGETHER!

**~115K HOMES TO RECEIVE A \$60 BILL CREDIT**

**100% CLEAN ENERGY BY 2030**

**Learn more about EAST BAY COMMUNITY ENERGY at [www.eastbayenergy.com](#)**

## LOCAL INVESTMENT

**FREE INDUCTION COOKTOP LENDING PROGRAM**

**Learn more about EAST BAY COMMUNITY ENERGY at [www.eastbayenergy.com](#)**

**\$4.2M IN COMMUNITY INNOVATION GRANTS**

**Learn more about EAST BAY COMMUNITY ENERGY at [www.eastbayenergy.com](#)**

**\$21M+ BUDGETED FOR ENERGY PROGRAMS**

**Learn more about EAST BAY COMMUNITY ENERGY at [www.eastbayenergy.com](#)**

# 15,000+ HOMES PER YEAR

can be powered by EBCE's  
new solar farm in Tulare County.

The Luciana solar project in Tulare County, CA started producing electricity in May 2022. EBCE is purchasing the output of 56MW for 15 years, which will generate clean and affordable power equivalent to the needs of over 15,000 California homes

Learn more about the Tulare County solar farm at [ebce.org/power-projects](http://ebce.org/power-projects)

## 2021 Power Content Label · East Bay Community Energy

| Greenhouse Gas Emissions Intensity<br>(lbs CO <sub>2</sub> e/MWh) |                  |                  |                            | Energy Resources  | Renewable<br>100 | Brilliant<br>100 | Bright<br>Choice | 2021 CA<br>Power Mix |
|---|------------------|------------------|----------------------------|---|------------------|------------------|------------------|----------------------|
| Renewable<br>100  | Brilliant<br>100 | Bright<br>Choice | 2021 CA<br>Utility Average | Eligible Renewable <sup>1</sup>   | 100.0%           | 35.8%            | 42.3%            | 33.6%                |
| 0   | 0                | 563.94           | 456                        | Biomass & Biowaste  | 0.0%             | 0.0%             | 0.5%             | 2.3%                 |
|   |                  |                  |                            | Geothermal  | 0.0%             | 0.0%             | 0.0%             | 4.8%                 |
|   |                  |                  |                            | Eligible Hydroelectric  | 0.0%             | 0.0%             | 0.2%             | 1.0%                 |
|   |                  |                  |                            | Solar   | 50.0%            | 17.9%            | 19.0%            | 14.2%                |
|   |                  |                  |                            | Wind  | 50.0%            | 17.9%            | 22.6%            | 11.4%                |
|   |                  |                  |                            | Coal  | 0.0%             | 0.0%             | 0.0%             | 3.0%                 |
|   |                  |                  |                            | Large Hydroelectric   | 0.0%             | 64.2%            | 15.9%            | 9.2%                 |
|   |                  |                  |                            | Natural Gas   | 0.0%             | 0.0%             | 0.0%             | 37.9%                |
|   |                  |                  |                            | Nuclear   | 0.0%             | 0.0%             | 1.7%             | 9.3%                 |
|   |                  |                  |                            | Other   | 0.0%             | 0.0%             | 0.1%             | 0.2%                 |
|   |                  |                  |                            | Unspecified sources<br>of power <sup>2</sup>                                    | 0.0%             | 0.0%             | 40.0%            | 6.8%                 |
|   |                  |                  |                            | <b>TOTAL</b>  | <b>100.0%</b>    | <b>100.0%</b>    | <b>100.0%</b>    | <b>100.0%</b>        |
|   |                  |                  |                            | <b>Percentage of Retail Sales Covered by Retired Unbundled RECs<sup>3</sup></b> | <b>0.0%</b>      | <b>0.0%</b>      | <b>0.0%</b>      |                      |

<sup>1</sup> The eligible renewable percentage above does not reflect RPS compliance, which is determined using a different methodology.

<sup>2</sup> Unspecified power is electricity that has been purchased through open market transactions and is not traceable to a specific generation source.

<sup>3</sup> Renewable energy credits (RECs) are tracking instruments issued for renewable generation. Unbundled renewable energy credits (RECs) represent renewable generation that was not delivered to serve retail sales. Unbundled RECs are not reflected in the power mix or GHG emissions intensities above.

|   |   |
|---|---|
| For specific information about this electricity product, contact:             | East Bay Community Energy: 1-833-699-EBCE (3223)                          |
| For general information about the Power Content Label, please visit:          | <a href="http://www.energy.ca.gov/pcl/">http://www.energy.ca.gov/pcl/</a> |
| For additional questions, please contact the California Energy Commission at: | Toll-free in California: 844-454-2906<br>Outside California: 916-653-0237 |



1999 Harrison Street  
Suite 800  
Oakland, CA 94612

Resident Name  
123 Address St.  
Berkeley, CA 94702

LANGUAGES   
Español [ebce.org/es](http://ebce.org/es)  
中文 [ebce.org/cn](http://ebce.org/cn)

CONTACT US   
1-833-699-EBCE (3223)  
customer-support@ebce.org

This communication is required annually by the California Energy Commission.



# GREEN POWER

## 325MW FROM SOLAR AND WIND

providing clean energy for East Bay residents and businesses from EBCE's first four renewable-energy projects that came online in 2021-2022. An additional 10MW of energy storage came online in 2022.

Western Spirit (Tecolote) wind project in New Mexico

[Learn more about GREEN POWER at ebce.org/power-projects](https://ebce.org/power-projects)

# LOW RATES

## \$19M IN PROJECTED ANNUAL SAVINGS

relative to PG&E rates in fiscal year 2022-2023 from the 3% monthly savings EBCE's customers receive on our Bright Choice service.

Jennifer D. of Oakland—winner of an EBCE x Oakland Roots co-branded e-bike

[Learn more about LOW RATES at ebce.org/about-our-rates](https://ebce.org/about-our-rates)

# MAKING A DIFFERENCE, TOGETHER!

ALAMEDA COUNTY • ALBANY  
BERKELEY • DUBLIN • EMERYVILLE  
FREMONT • HAYWARD  
LIVERMORE • NEWARK • OAKLAND  
PIEDMONT • PLEASANTON  
SAN LEANDRO • TRACY • UNION CITY

## ~115k HOMES TO RECEIVE A \$50 BILL CREDIT

in fall 2022, resulting in \$5.6M in immediate savings for customers on CARE and FERA income-qualifying rates.

## 100% CLEAN ENERGY BY 2030

for all EBCE customers—the goal adopted by EBCE, 15 years ahead of California's target date. In 2022, EBCE's Bright Choice service target is 50% renewable energy.\*

### EBCE PLAN OPTIONS

|               |  |
|---------------|--|
| Bright Choice | 50% renewable energy target at a 3% discount to PG&E (including all fees)  |
| Renewable 100 | 100% California solar and wind power at slightly higher rates (3/4 of a cent per kWh more than PG&E's standard rate) |

\* EBCE does not include nuclear power in its clean energy calculations.



# LOCAL INVESTMENT

## FREE INDUCTION COOKTOP LENDING PROGRAM

launched for East Bay residents to borrow and “test drive” induction cooking in their own home.

Learn more about INDUCTION  
at [ebce.org/induction](http://ebce.org/induction)

## \$4.2M IN COMMUNITY INNOVATION GRANTS

to continue working with community-based organizations and local businesses to deliver benefits across EBCE’s service area.

Learn more about COMMUNITY GRANTS  
at [ebce.org/grants-and-sponsorships](http://ebce.org/grants-and-sponsorships)

## \$21M+ BUDGETED FOR ENERGY PROGRAMS—

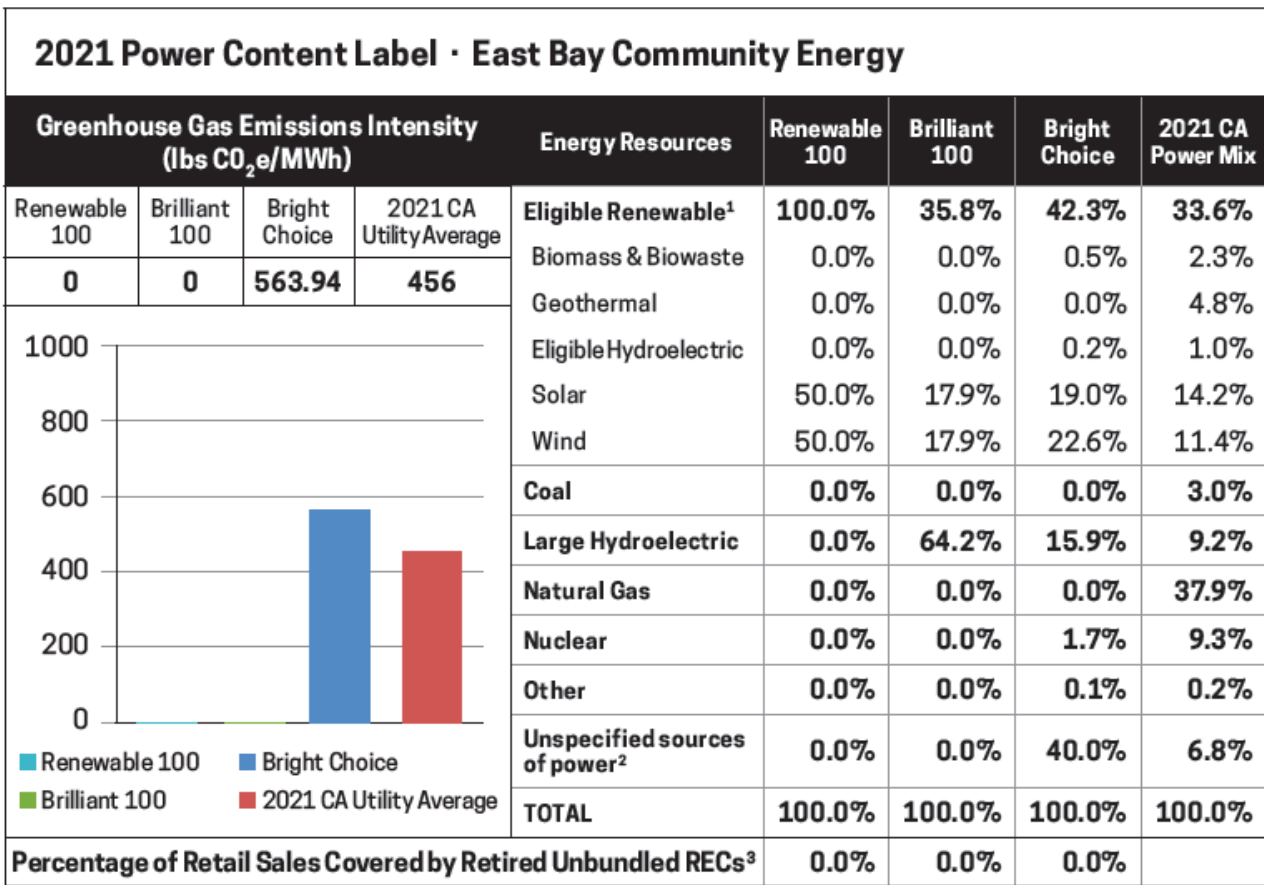
a +150% increase over last year’s annual budget for local programs, which includes \$12.75M for electric vehicles.

Learn more about LOCAL PROGRAMS  
at [ebce.org/programs](http://ebce.org/programs)

SUPPORTING OUR COMMUNITY

Powering a brighter tomorrow  
with green power, low rates,  
and local investment.

# 2021 Power Content Label



# October Renewable 100 Transitions

## City Overview:

- Commercial: Berkeley, Dublin, Emeryville, San Leandro
- Residential: Emeryville

## MEO Overview:

- Minimum of two customer notices
- Paid print and digital ads
- Social media
- Newsletters
- Chambers of Commerce
- Webinars

# Enrollment tracker- August

|              |                | Change from early August |           |
|--------------|----------------|--------------------------|-----------|
| Jurisdiction | Customer class | Opt Out                  | Remain On |
| Berkeley     | non-resi       | 0.06%                    | 0.29%     |
| Dublin       | non-resi       | 0.01%                    | 0.31%     |
| Emeryville   | resi           | 0.0%                     | 0.46%     |
|              | non-resi       | 0.01%                    | 0.6%      |
| San Leandro  | non-resi       | 0.06%                    | 0.12%     |



# October default transition enrollment actions

