

1/12/2023

EBCCE Community Solar RFO Meet + Greet



Welcome!

Agenda

- EBCE + CSGT Overview
- City Sponsor Introductions
- Developer Introductions

Introduction to EBCE

EBCE is a not-for-profit public agency that operates a Community Choice Energy program for Alameda County and fourteen incorporated cities, serving more than 630,000 residential and commercial customers.

Our communities launched a public power agency in 2018 to provide greener energy, low rates, and local community benefits.

East Bay Community Energy (EBCE) exists to provide more renewable energy at competitive rates to our customers.

WHAT ARE THE BENEFITS?



LOWER
RATES



LOCAL
INVESTMENT



SUSTAINABILITY



CUSTOMER
CHOICE

How does the Community Solar Program work?

Eligible organizations, such as Cities, partner with project developers to sponsor projects on behalf of nearby residents within a Disadvantaged Community (DAC).

Residential Customer Benefits:

- Support local, solar energy development
- 100% local, solar energy
- 20% electric bill discount on top of CARE or FERA discounts

Sponsor Benefits:

- Support local, solar energy development
- 20% electric bill discount on up to 25% of project output
- Collaborate to offer benefit to low-income customers

Eligibility Details

The solar project must be:

- Located in a Disadvantaged Community (DAC), and
- Within 5 miles of the customers' community (defined according to its census tract borders)

Customers subscribed to the project must be:

- Located in a DAC that is within 5 miles of the solar project
- At least 50% of customer subscribers must be low-income

Community Sponsor must be:

- Local government, non-profit, community-based organizations, or schools
- In order to be eligible for the 20% bill discount, sponsors must also be based in a DAC that is within 5 miles of the project and be an EBCE customer

Program Background

The CPUC in 2018 adopted Decision 18-06-027, creating the community solar program. The program promotes the development of renewable generation in communities historically left behind in clean infrastructure development.

- Pursuant to the Decision, EBCE may implement its own community solar programs in its service area.
- EBCE's Community Solar program allows customers to receive **100% solar energy at a 20% discount** on their electric bills.
- The CPUC has allocated approximately 1.6 megawatts (MW) of program capacity to EBCE.
- The program requires a **community sponsor** of the project and will result in projects **located within five miles** of the community it serves.

Community Solar Program	
EBCE Program Size:	~1.6 MW (serves ~450 customers)
Participant Requirements:	At least 50% of participants must be residential customers who are CARE/FERA eligible; all participants must live in a DAC
Other Requirements:	<ul style="list-style-type: none">▪ Community Sponsor▪ Located within 5 miles of community served▪ Workforce development requirements

A Note on Disadvantaged Communities (“DACs”)

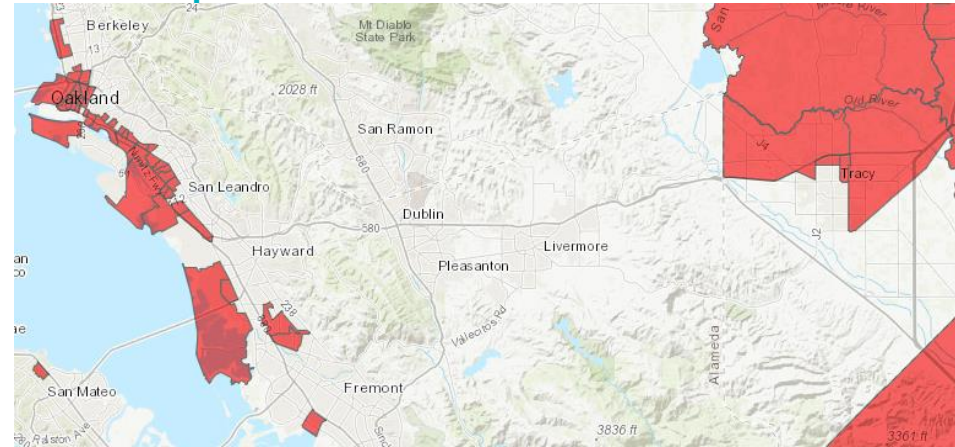
What is a DAC?

- For purposes of the program, DACs are defined geographically as the **25% highest-scoring census tracts in CalEnviroScreen (CES) 3.0 and 4.0**, a scoring methodology developed by CalEPA.
- The CPUC defines DACs in the following way:
 - “Disadvantaged communities refers to the areas throughout California which most suffer from a combination of economic, health, and environmental burdens. These burdens include poverty, high unemployment, air and water pollution, presence of hazardous wastes as well as high incidence of asthma and heart disease.

Where can I find more about CES 3.0 and 4.0 and DACs?

- Census tract-level data and maps are provided by CalEPA: <https://oehha.ca.gov/calenviroscreen>

Snapshot of DACs in EBCE’s service area



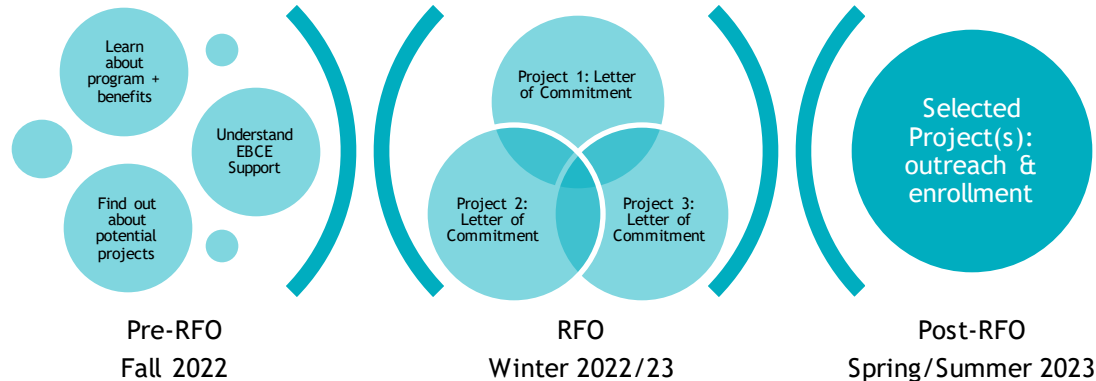
Respondents are required to independently validate project location eligibility.

Sponsor Role + Timing

Help connect community with local solar projects by:

- Provide a Letter of Commitment for project(s) proposed in your City as a part of EBCE's Request for Offers (RFO) process for the Community Solar Program
- Working with EBCE to conduct outreach and create interest in subscribing to the project if sponsored project(s) selected

What do Sponsors need to do when?

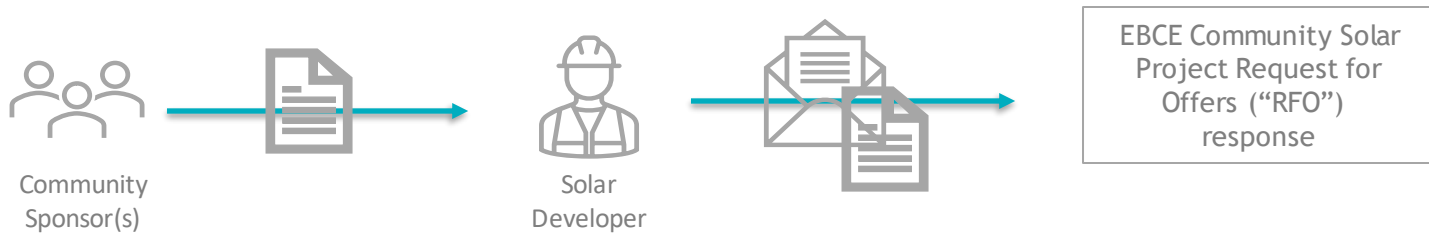


Sponsorship: RFO Letter of Commitment

CPUC requires that project developers obtain a **letter of commitment from a project sponsor** that includes:

- “Demonstration of substantial interest of community members in subscribing to project;
- Estimated number of subscribers, with justification to ensure project is sized to likely demand;
- A preliminary plan to conduct outreach and recruit subscribers; and
- Siting preferences, including community-suggested host sites, and verification that the site chosen for the bid is consistent with community preference.”

The sponsor provides the letter to the project developer, who includes it in their bid package to EBCE.



City Sponsor Introductions

City of Hayward: Erik Pearson, AICP
Environmental Services Manager
erik.pearson@hayward-ca.gov

City of Oakland: Daniel L. Hamilton
Sustainability and Resilience Director
Dhamilton2@oaklandca.gov

City of San Leandro: Hoi-Fei Mok, PhD
Pronouns: they/them
Sustainability Manager
hfmok@sanleandro.org

Developer Introductions

Please provide your name, overview of your firm and experience.

Upcoming Events

Respondent Webinar **January 18, 2023 at 2:00 PM**

- Webinar link will be posted at <https://ebce.org/solicitations/>

Respondents are *strongly encouraged* to check <https://ebce.org/solicitations/> on a regular basis for updates to this solicitation

THANK YOU!

RFO Contact Email:

2022communitysolarrfo@ebce.org