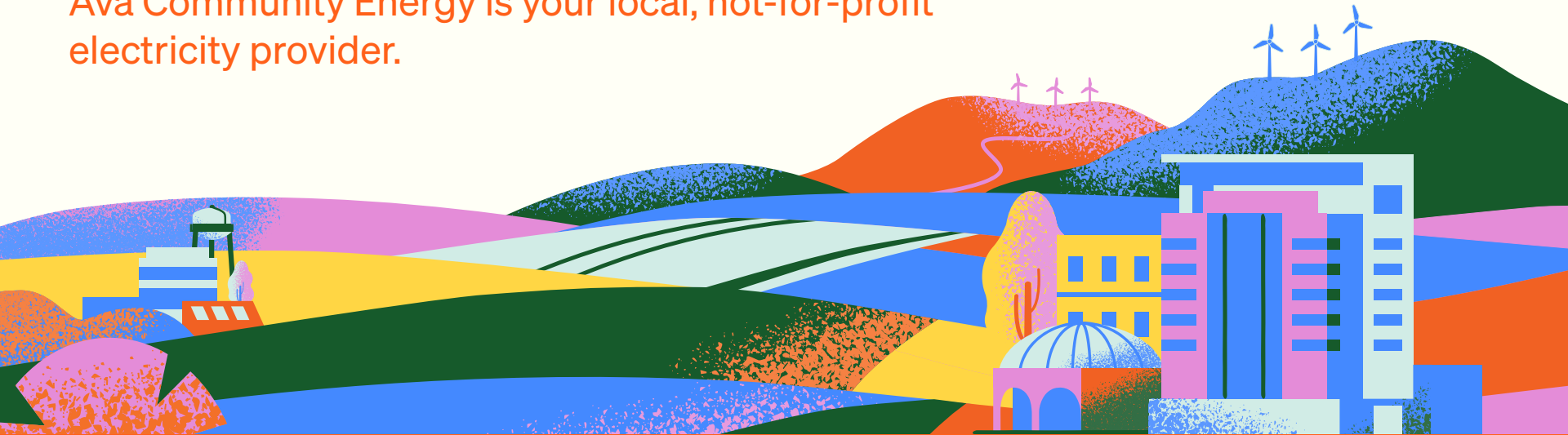


Serving Alameda County and the Valley

Ava Community Energy is your local, not-for-profit electricity provider.



Alameda County · Albany · Berkeley · Dublin · Emeryville · Fremont · Hayward · Lathrop · Livermore · Newark · Oakland · Piedmont · Pleasanton · San Leandro · Stockton · Tracy · Union City

Ava Community Energy is the default electricity provider for Alameda County and the cities of Tracy, Stockton, and Lathrop.

We generate clean energy at lower rates, and PG&E delivers it.

As a not-for-profit public agency, we reinvest in our communities through customer programs, clean power projects, and support for local organizations.



\$176 million
Total customer savings since 2018



\$115 million
Reinvested in our community since 2018



756,000+
Accounts served in Alameda and San Joaquin Counties

Every year, electricity suppliers in California are required to let their consumers know the mix of sources used to provide electricity service during the previous calendar year. Ava Community Energy is your public power provider. Our Power Content Label appears below.

Our Power Mix

As your public power provider, we're proud of our track record of providing renewable energy at competitive rates.

- This label does not reflect compliance with the Renewables Portfolio Standard (RPS), which measures the use of tracking instruments called Renewable Energy Credits (RECs) over the course of multi-year compliance periods. RECs that are purchased separately from the renewable energy ("Unbundled RECs") can be used for RPS compliance, but they do not factor into the power mixes or GHG emissions intensities above.
- GHG intensity figures exclude biogenic CO2 and emissions from geothermal sources and grandfathered imports of firmed-and-shaped energy. For detailed information about all GHG emissions from California's retail electricity suppliers, visit the CEC webpage at the link below.
- Unspecified power is electricity purchased from a genericized pool on the open market.

Want to learn more? Visit <https://www.energy.ca.gov/programs-and-topics/programs/power-source-disclosure-program>

2024 POWER CONTENT LABEL			
Ava Community Energy			
	Bright Choice	Renewable 100	CA Utility Average
Greenhouse Gas Emissions Intensity (lbs of CO ₂ e emitted per megawatt hour)	221	0	359
Electricity Sources			
RPS Eligible Renewables	62%	100%	45%
Biomass & Biogas	10%	0%	2%
Geothermal	1%	0%	5%
Eligible Hydroelectric	2%	0%	2%
Solar	18%	77%	23%
Wind	31%	23%	14%
Large Hydroelectric	34%	0%	10%
Nuclear	0%	0%	11%
Emerging Technologies	0%	0%	0%
Other	0%	0%	0%
Natural Gas	0%	0%	10%
Coal & Petroleum	0%	0%	2%
Unspecified Power (primarily fossil fuels)	4%	0%	22%
Total	100%	100%	100%
Retail sales covered by retired unbundled RECs	0%	0%	
AvaEnergy.org/about-ava/key-documents			