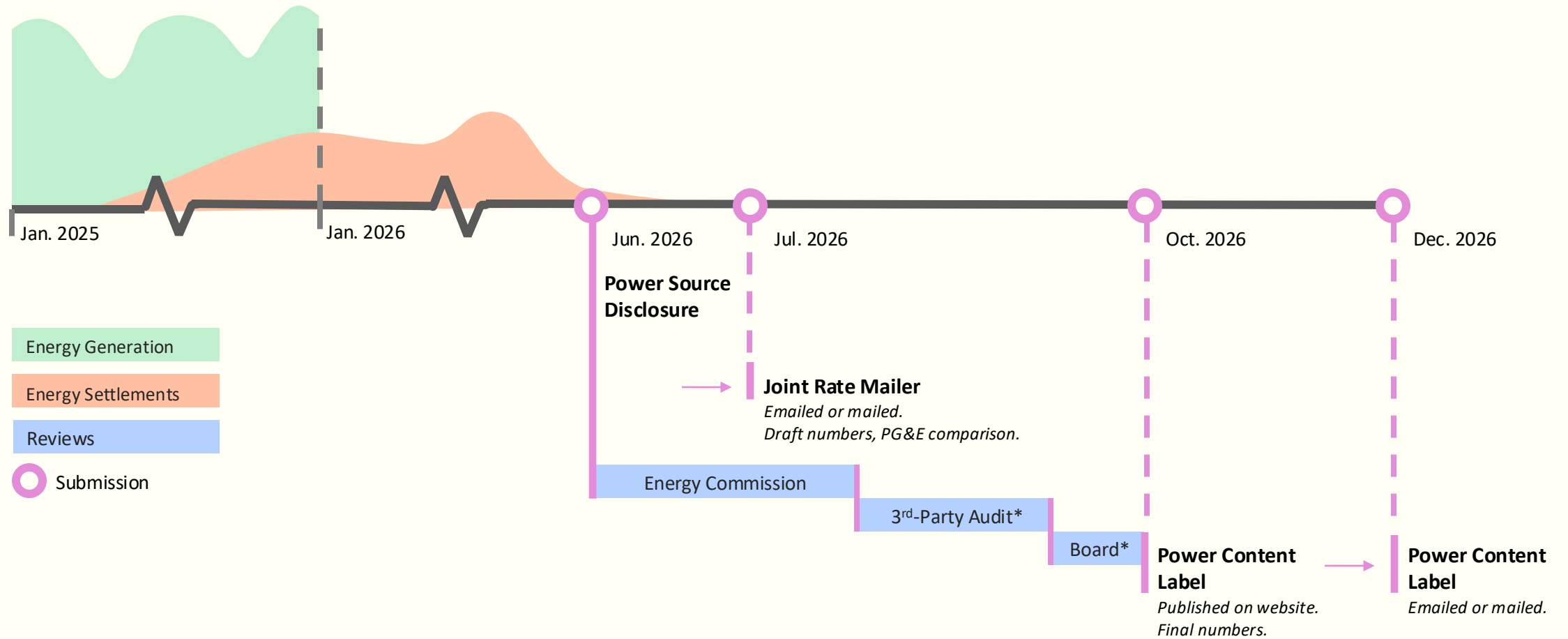


2025 Power Content Label Updates

June 12, 2026



What is the Power Content Label Reporting Process?



*CCR 20.2.5.5, §1394 –
 Public agencies may either engage an auditor or submit an attestation.
 → Board voted to engage auditor starting in 2023, so no attestation needed.



What is the Power Content Label?

→ A “nutrition label” for electricity.

- Published annually, based on the Power Source Disclosure Report for the prior calendar year’s electricity generation from owned or contracted-for resources.
- Provides a detailed breakdown of the sources of energy used to provide electricity.

Submission is reviewed and approved by the California Energy Commission.

2024 POWER CONTENT LABEL			
Ava Community Energy			
	Bright Choice	Renewable 100	CA Utility Average
Greenhouse Gas Emissions Intensity (lbs of CO ₂ e emitted per megawatt hour)	221	0	359
Electricity Sources ■ Renewables and Zero-Carbon Resources ■ Fossil Fuels and Unspecified Power			
RPS Eligible Renewables	62%	100%	45%
Biomass & Biogas	10%	0%	2%
Geothermal	1%	0%	5%
Eligible Hydroelectric	2%	0%	2%
Solar	18%	77%	23%
Wind	31%	23%	14%
Large Hydroelectric	34%	0%	10%
Nuclear	0%	0%	11%
Emerging Technologies	0%	0%	0%
Other	0%	0%	0%
Natural Gas	0%	0%	10%
Coal & Petroleum	0%	0%	2%
Unspecified Power (primarily fossil fuels)	4%	0%	22%
Total	100%	100%	100%



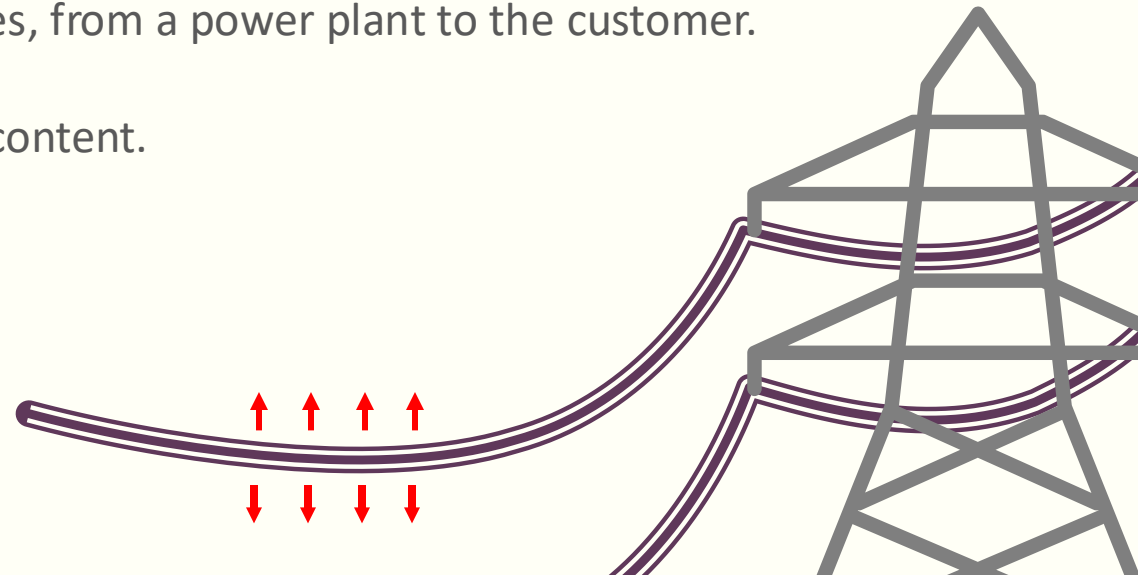
Line Losses

→ Account for energy dissipating over transmission and distribution lines.

- California Code of Regulations, 20.2.5.5 (July 2025)
 - §1392 (a.8.A) – “A retail supplier’s transmission and distribution losses shall be determined by applying a loss factor to each specified resource and to unspecified power.”
 - §1393 (b.2.B) – “retail suppliers shall report transmission and distribution losses associated with each procurement.”
- This change will capture the emissions associated with the fraction of electrons that escapes as heat into the environment as they travel across power lines, from a power plant to the customer.

Effective for 2026 submission for **Calendar Year 2025** power content.

Line losses **will** impact Power Content Label.

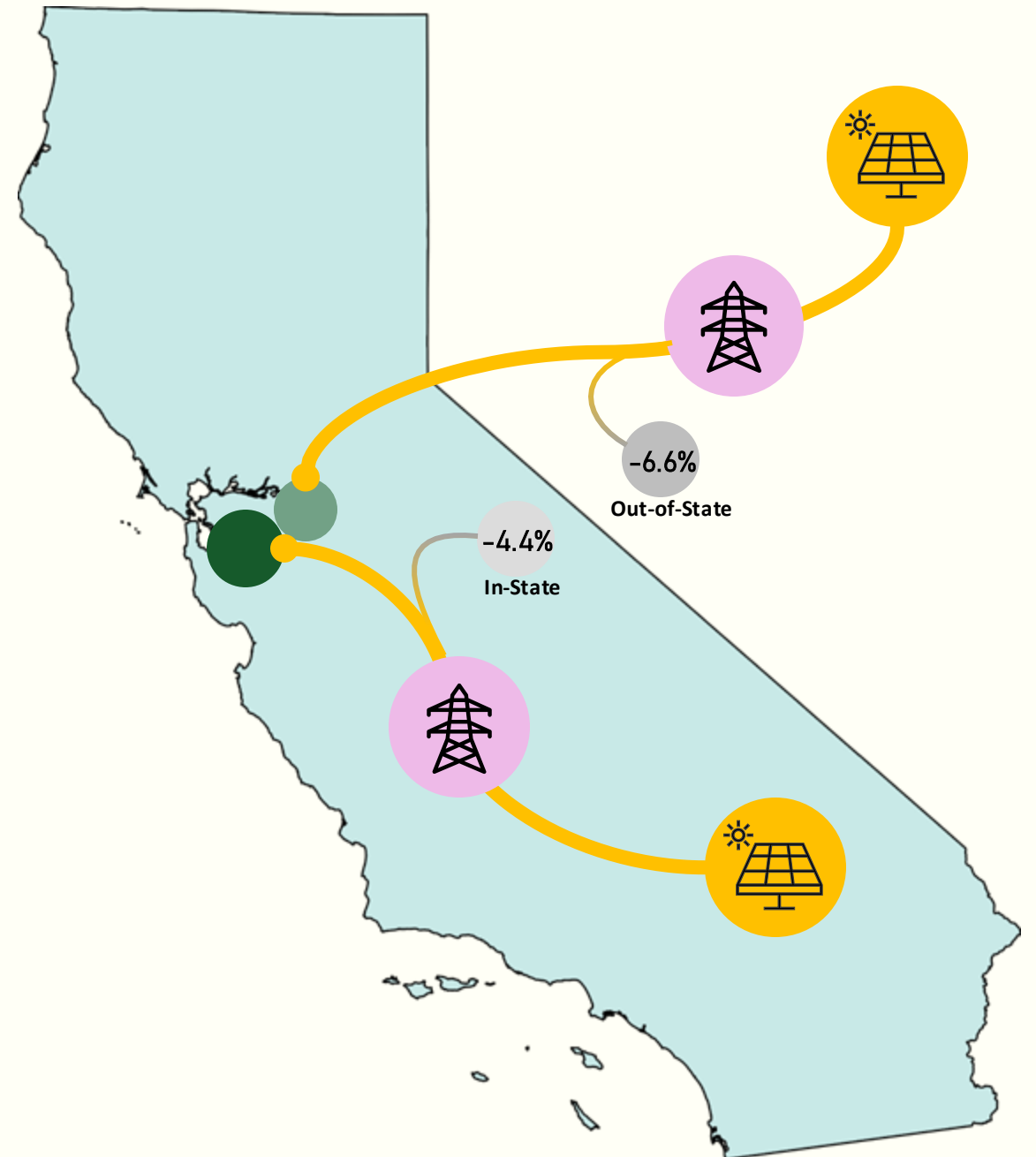


2025 Changes to Power Source Disclosure Report

Line Losses

→ Varies by resource location.

- Losses are assigned to each specified resource by location (in-state or out-of-state.)
- Additional specified procurement can cover some losses...
 - ...but said procurement is also subject to line losses.



2025 Changes to Power Content Label

Line Losses

→ increased 'Unspecified Power' and reduced RE/CF in total loss-adjusted load.

2025 Summary Power Content Label	Bright Choice	Renewable 100	Total Retail Sales	Total Loss-Adjusted Load
GHG Emissions Intensity	194	0	134	168
<i>Biomass & Biogas</i>	12%	0%	9%	8%
<i>Geothermal</i>	1%	0%	1%	1%
<i>Eligible Hydroelectric</i>	1%	0%	1%	1%
<i>Solar</i>	25%	61%	36%	34%
<i>Wind</i>	15%	39%	21%	20%
Total Renewables	54%	100%	68%	64%
Large Hydroelectric	36%	0%	25%	24%
Nuclear	9%	0%	6%	7%
Unspecified Power	1%	0%	1%	5%

